

PLAN

GENERAL NOTES:

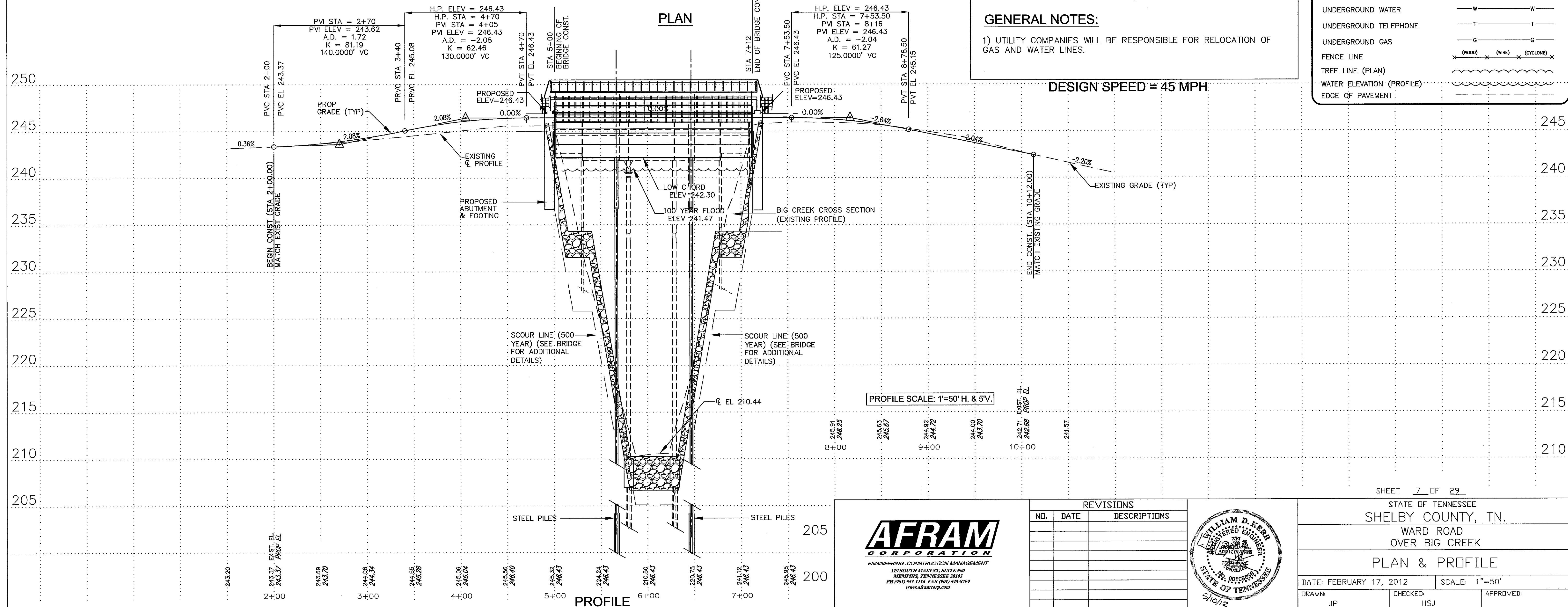
1) UTILITY COMPANIES WILL BE RESPONSIBLE FOR RELOCATION OF GAS AND WATER LINES.

DESIGN SPEED = 45 MPH

LEGEND

- SOIL TEST BORING
- FIRE HYDRANT
- GAS AND WATER VALVE
- UNDERGROUND WATER
- UNDERGROUND TELEPHONE
- UNDERGROUND GAS
- FENCE LINE
- TREE LINE (PLAN)
- WATER ELEVATION (PROFILE)
- EDGE OF PAVEMENT

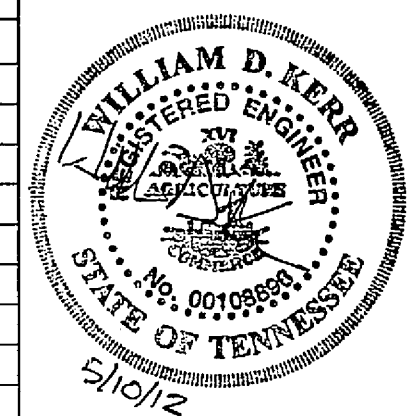
G.V. W.V.
 W
 T
 G
 (WOOD) (WIRE) (CYCLOPS)
 (CYCLOPS)



PROFILE



REVISIONS		
NO.	DATE	DESCRIPTIONS



SHEET 7 OF 29

STATE OF TENNESSEE
SHELBY COUNTY, TN.
WARD ROAD
OVER BIG CREEK
PLAN & PROFILE

DATE: FEBRUARY 17, 2012 SCALE: 1"=50'

DRAWN: JP CHECKED: HSJ APPROVED: