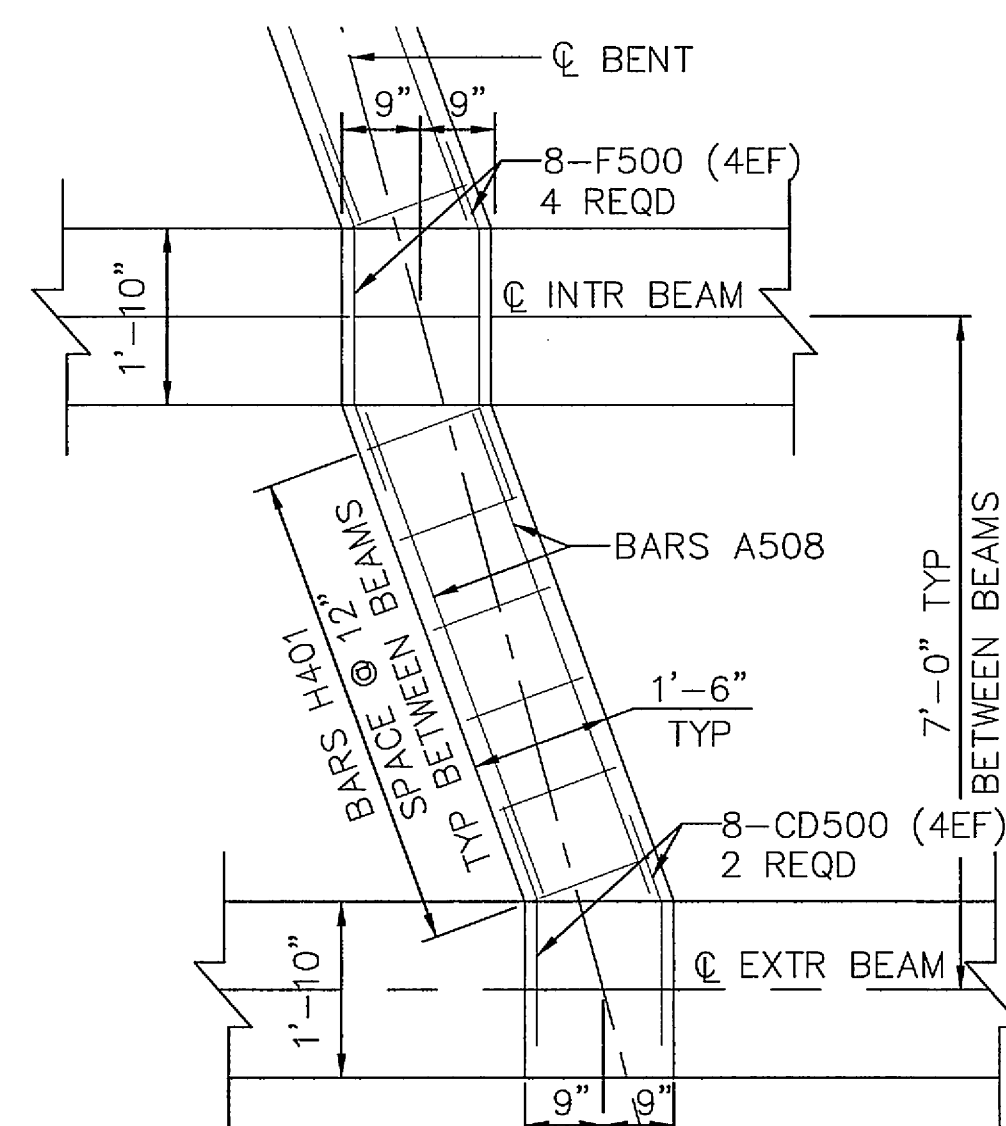
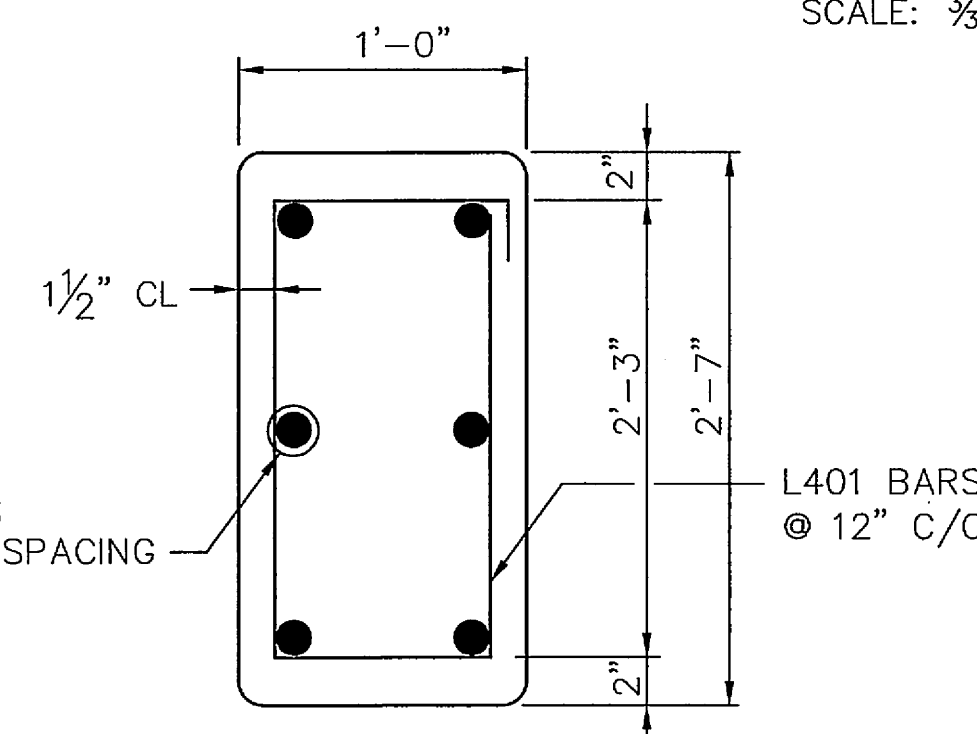


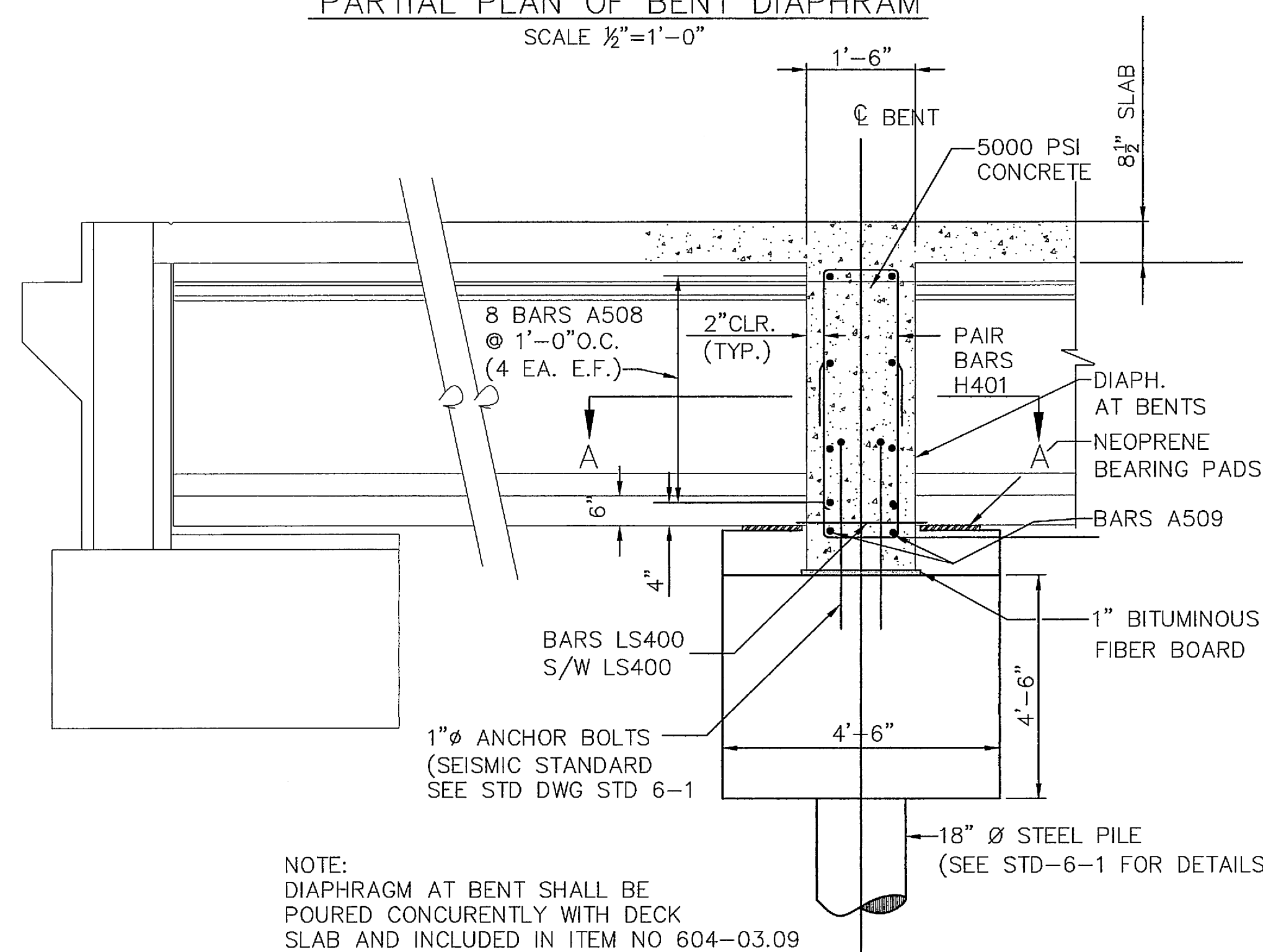
FRAMING PLAN
SCALE: $\frac{3}{32}$ "=1'-0"



PARTIAL PLAN OF BENT DIAPHRAM
SCALE $\frac{1}{2}$ "=1'-0"

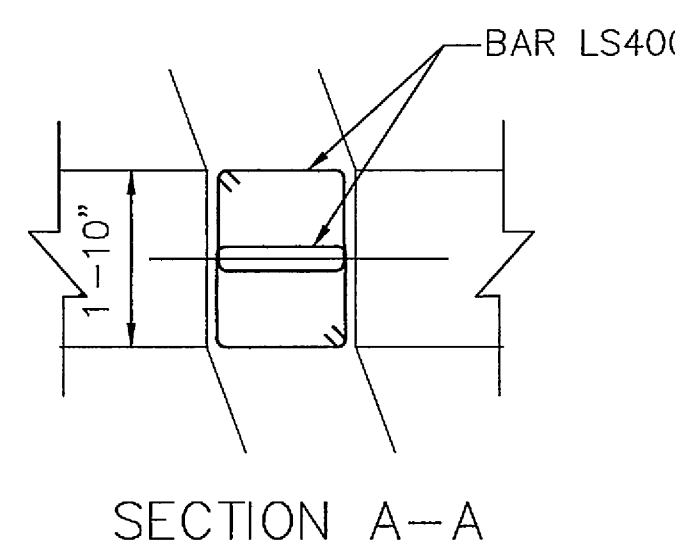


INTER. DIAPHRAGM
SCALE $1\frac{1}{2}$ "=1'-0"

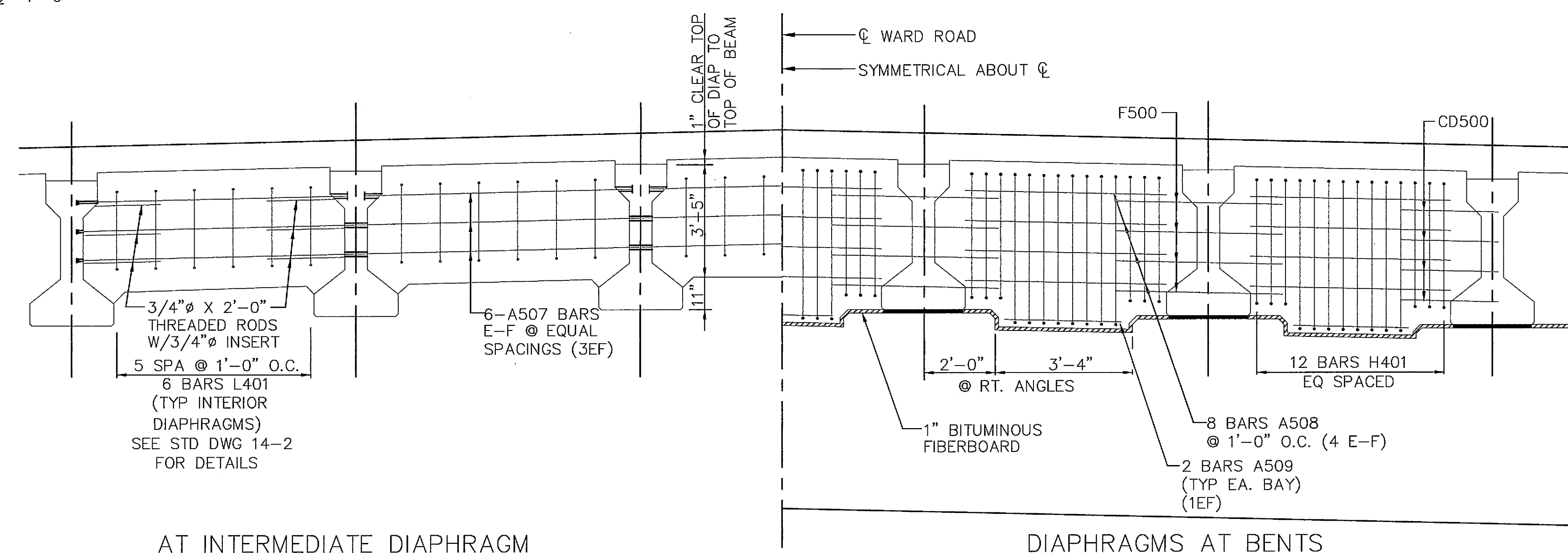


ABUTMENT SECTION
SCALE $\frac{1}{2}$ "=1'-0"

BENT SECTION
SCALE $\frac{1}{2}$ "=1'-0"



SECTION A-A



AT INTERMEDIATE DIAPHRAGM

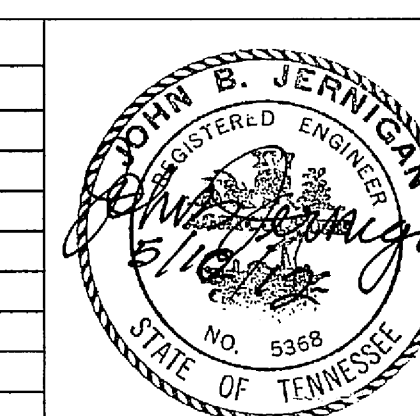
TYPICAL SECTION
ELEVATION FOR DIAPHRAGMS
(LOOKING AHEAD)(LOOKING BACK SIMILAR)

DIAPHRAGMS AT BENTS

NOTE:
DIAPHRAGM AT BENT SHALL BE
POURED CONCURRENTLY WITH DECK
SLAB AND INCLUDED IN ITEM NO 604-03.09



REVISIONS		
NO.	DATE	DESCRIPTIONS



STATE OF TENNESSEE SHELBY COUNTY, TN. WARD ROAD OVER BIG CREEK SUPERSTRUCTURE FRAMING		
DATE: FEBRUARY 17, 2012	SCALE: N.T.S.	
DRAWN: JP	CHECKED: HSJ	APPROVED: