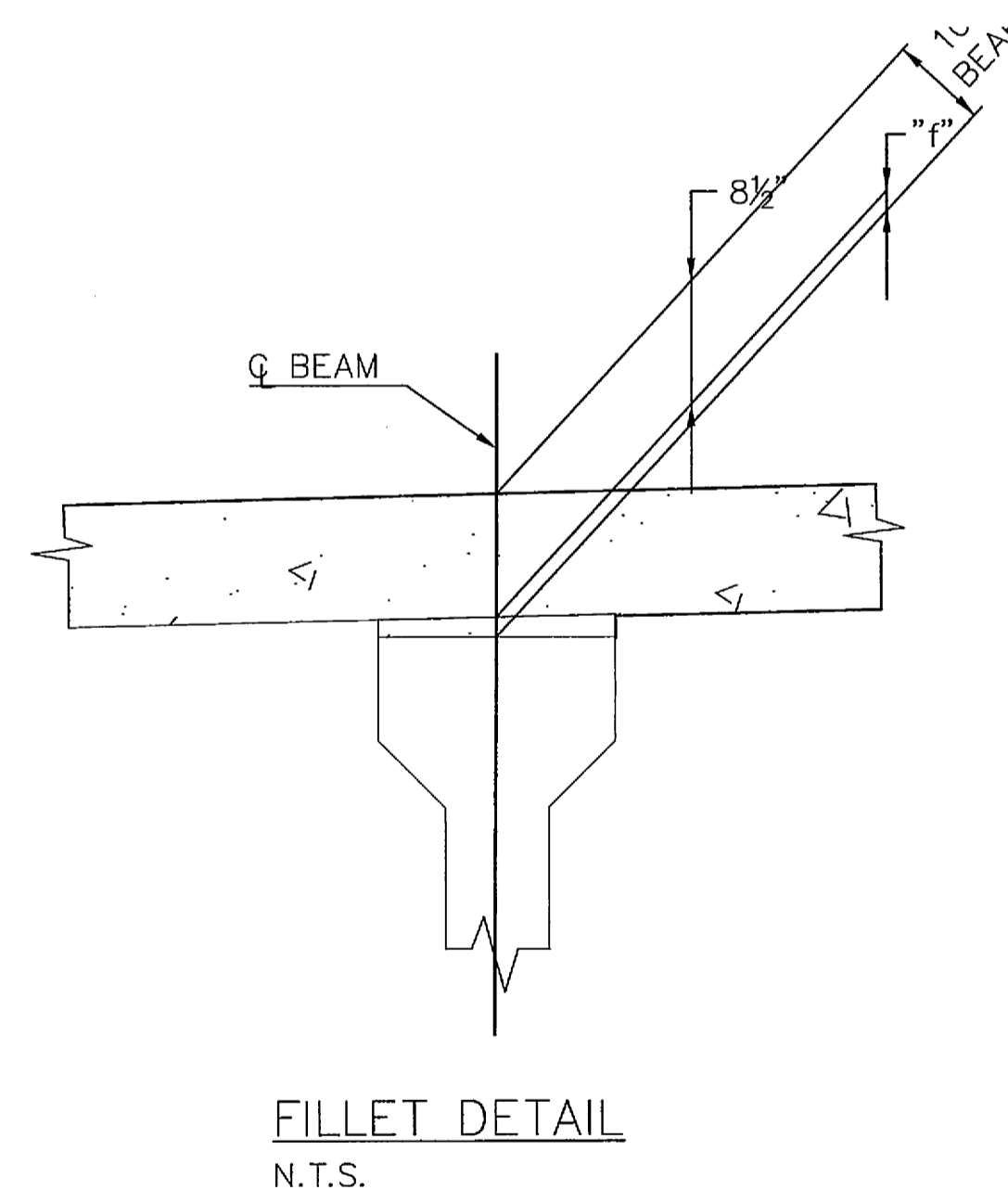
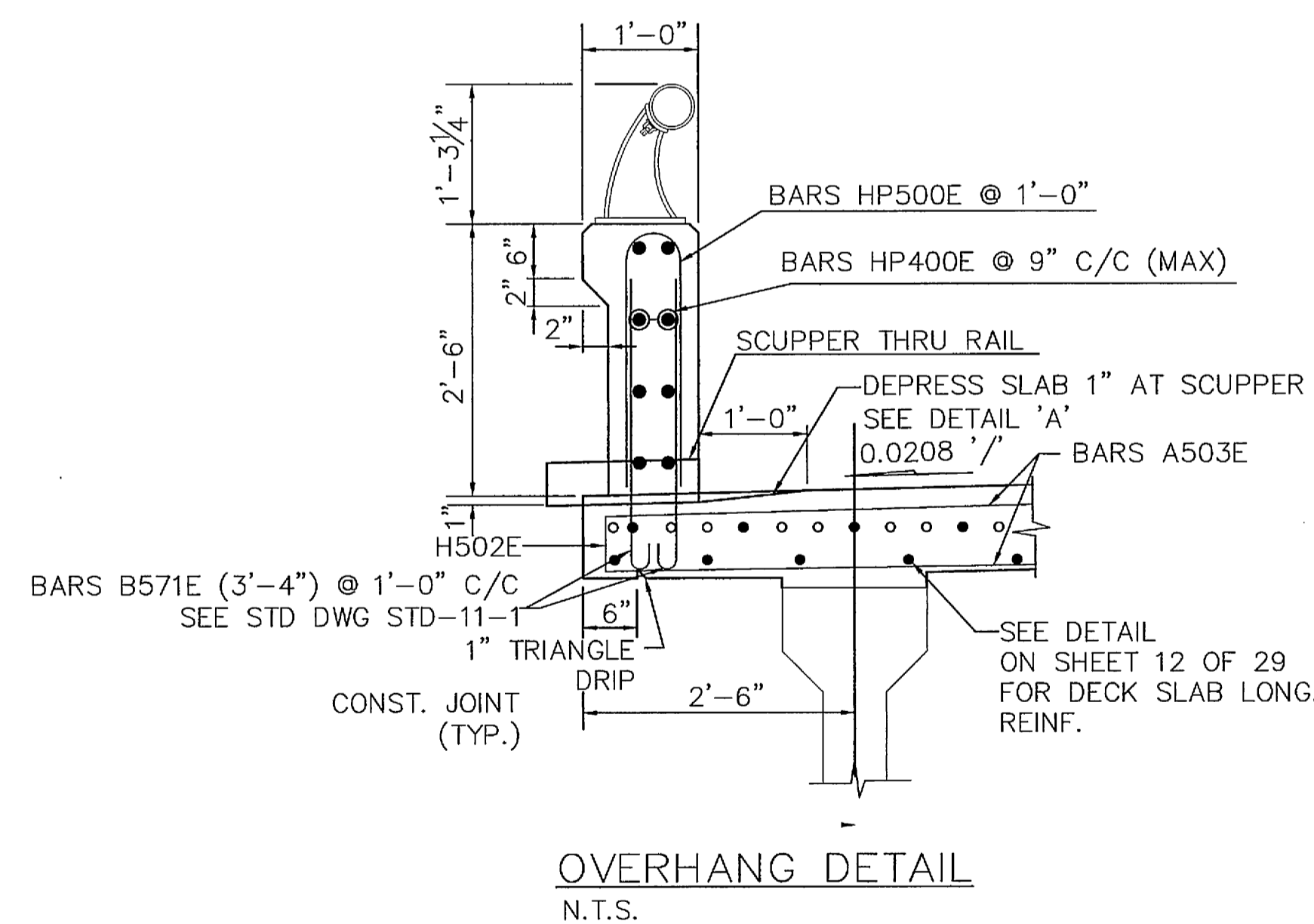


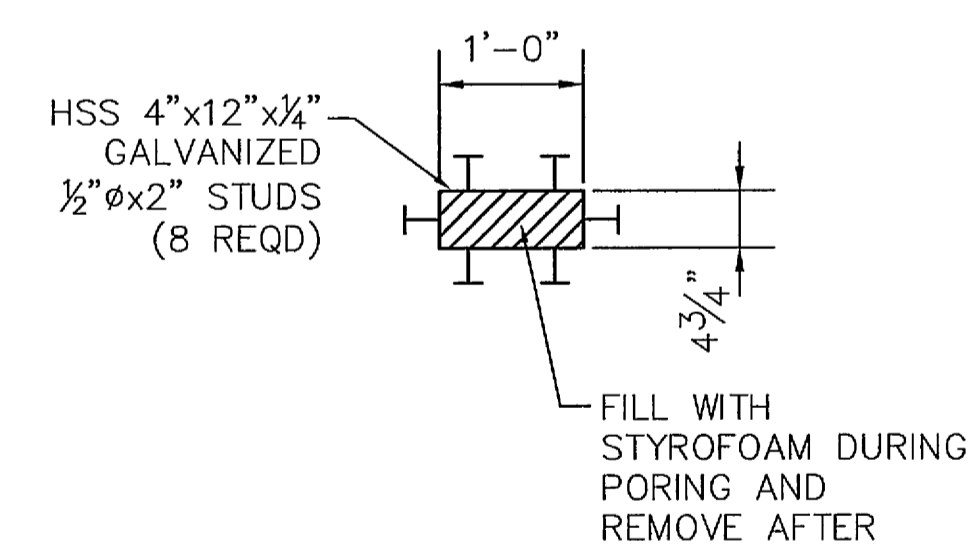
TYPICAL SECTION THROUGH SLAB  
SCALE: 3/8" = 1'-0"



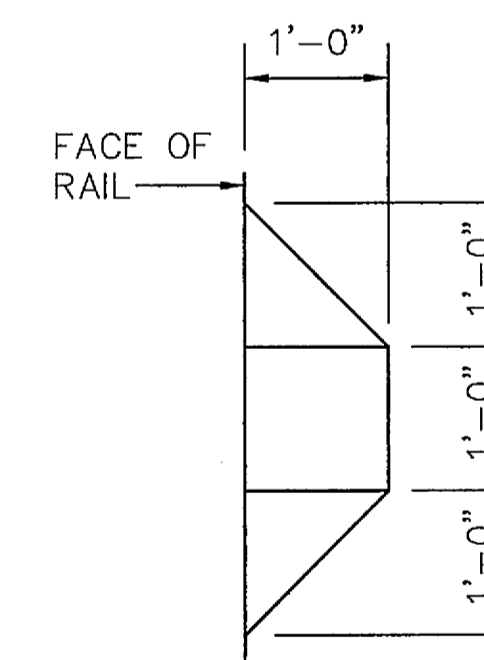
FILLET DETAIL  
N.T.S.



OVERHANG DETAIL  
N.T.S.



TYPICAL SCUPPER  
THRU RAIL  
N.T.S.



DETAIL 'A'  
N.T.S.

# GENERAL NOTES:

- DECK CONCRETE POURING SEQUENCE: SLAB CONSTRUCTION JOINTS MAY BE LOCATED AT THE CONTRACTOR'S OPTION SUBJECT TO THE FOLLOWING:
  - NO CONSTRUCTION JOINT MAY BE LOCATED CLOSER THAN 10 FEET OR FARTHER THAN 15 FEET FROM AN INTERIOR SUPPORT.
  - POURED TO WITHIN AT LEAST 15 FEET OF THE SUPPORT EITHER PRIOR TO OR CONCURRENTLY WITH THE SLAB OVER AN INTERIOR SUPPORT.
- ANCHOR BOLT ASSEMBLIES AT BENT SHALL BE IN ACCORDANCE WITH STANDARD DRAWING STD-6-1.
- THE PARAPET SHALL NOT BE POURED UNTIL THE SLAB IS POURED AND CURED. WHEN POURING PARAPET, PROVISIONS SHALL BE MADE FOR SETTING ANCHOR BOLTS FOR PARAPET RAILS. ALSO SEE DRAWING NO. STD-11-1.
- THE CONTRACTOR IS SOLELY RESPONSIBLE FOR SUPPORTING THE BEAM TO PREVENT DAMAGE DUE TO TWISTING OR OVERTURNING DURING ALL PHASES OF CONSTRUCTION. IT IS STRONGLY RECOMMENDED THAT THE TEMPORARY ERECTION DIAPHRAGMS BE INSTALLED AND THE PERMANENT INTERMEDIATE DIAPHRAGMS BE POURED AND CURED PRIOR TO PLACING ANY LOAD ON THE GIRDERS. HOWEVER, TEMPORARY ERECTION DIAPHRAGMS AND PERMANENT INTERMEDIATE DIAPHRAGMS MUST BE IN PLACE IN THE SPAN AT THE TIME THE SLAB IS POURED IN SAID SPAN.
- SUPPORT DIAPHRAGMS AT BENTS SHALL BE POURED CONCURRENTLY WITH THE DECK SLAB AND INCLUDED IN THE QUANTITY FOR 604-03.09.
- INTERMEDIATE DIAPHRAGMS SHALL BE CAST-IN-PLACE CONCRETE AS SHOWN IN PLANS & SHALL NOT BE PAID FOR DIRECTLY. PERMANENT STRUCTURAL STEEL DIAPHRAGMS ARE UNACCEPTABLE.
- SPLICE LENGTHS:
 

MIN. LAP	#4--	1'-8"
	#5--	2'-2"
	#6--	2'-9"
- DISALLOW THE USE OF CONCRETE DECK PANELS.

## FILLET NOTE:

AFTER THE BEAMS ARE IN PLACE, THE CONTRACTOR SHALL FIELD MEASURE THE TOP OF BEAM ELEVATIONS. THESE ELEVATIONS SUBTRACTED FROM THE FINISHED GRADE ELEVATIONS MINUS THE SLAB THICKNESS PLUS THE ALGEBRAIC DEAD LOAD DEFLECTIONS EQUALS THE REQUIRED FILLET THICKNESS "F".

SHEET 11 OF 29

STATE OF TENNESSEE  
SHELBY COUNTY, TN.

WARD ROAD  
OVER BIG CREEK

PROPOSED TYPICAL SECTION

DATE: FEBRUARY 17, 2012	SCALE: N.T.S.
DRAWN: JP	CHECKED: HSJ
APPROVED:	

**AFRAM**  
CORPORATION  
ENGINEERING - CONSTRUCTION MANAGEMENT  
119 SOUTH MAIN ST, SUITE 500  
MEMPHIS, TENNESSEE 38103  
PH (901) 545-1116 FAX (901) 545-9799  
www.aframcorp.com

