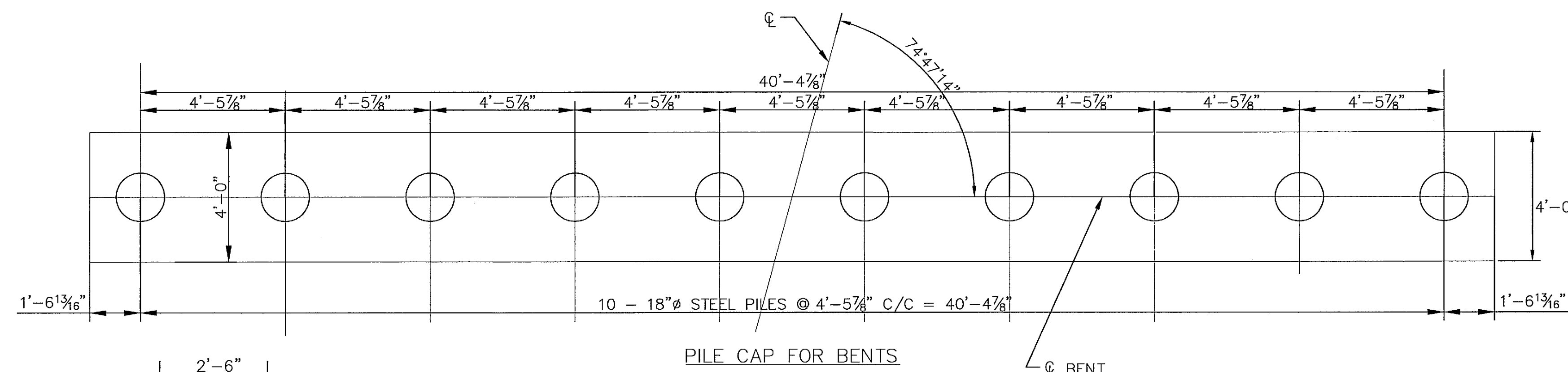
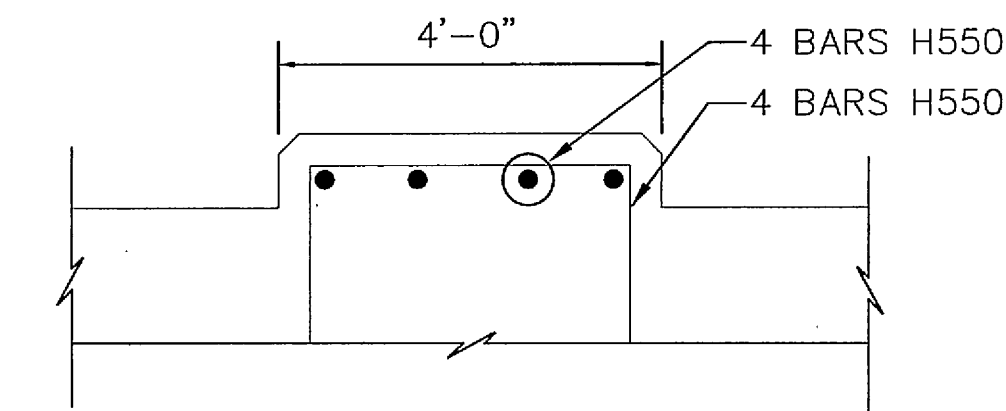
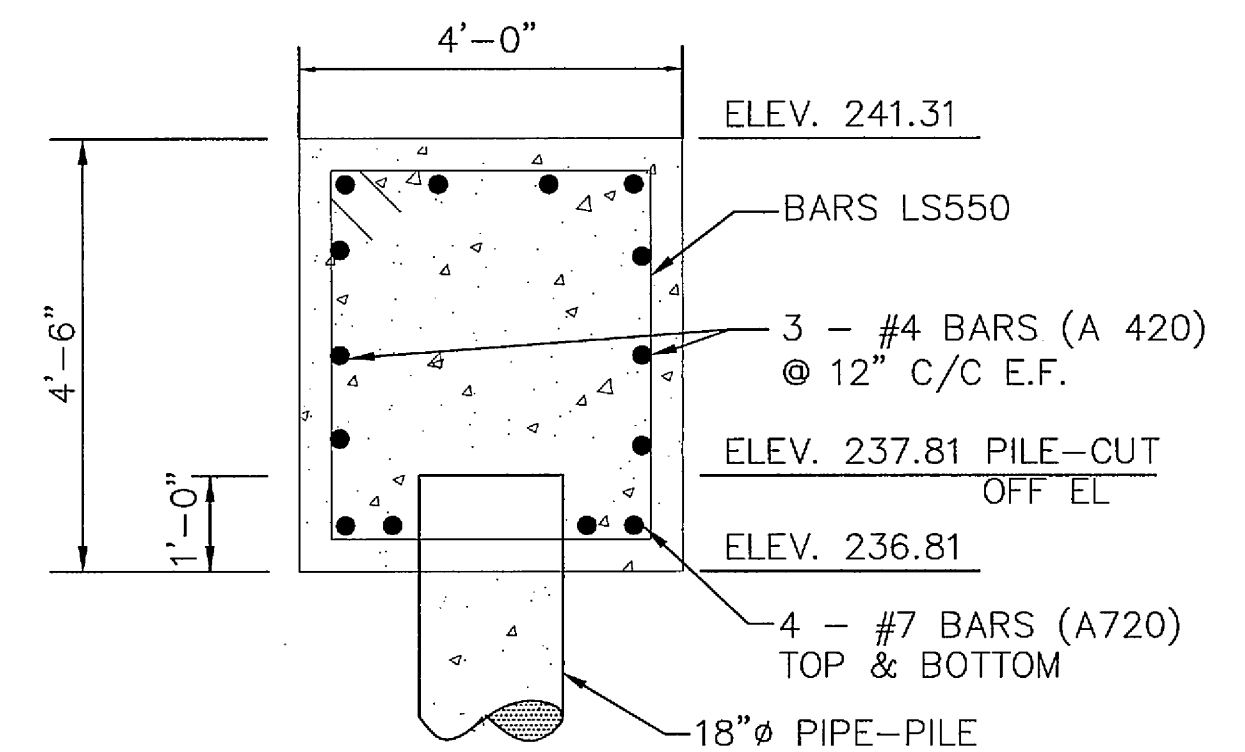
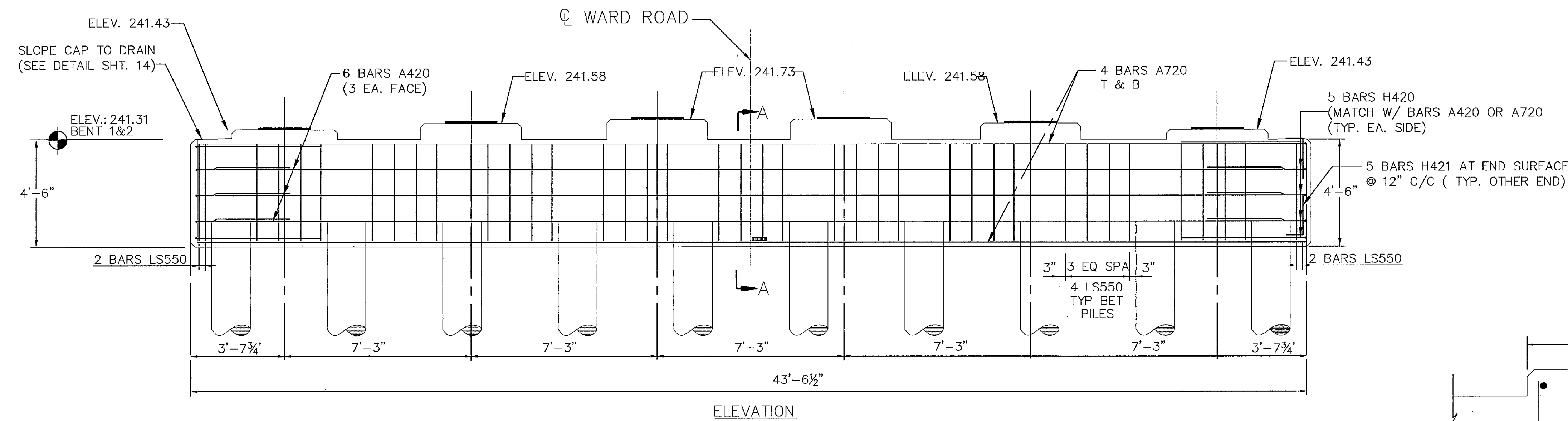
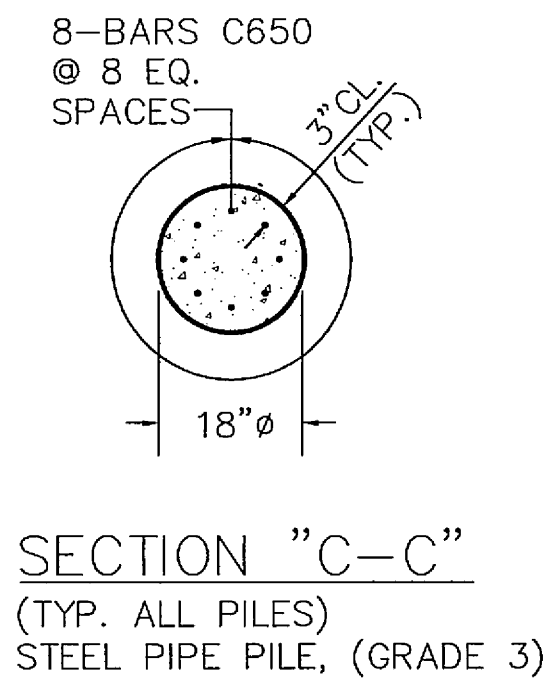
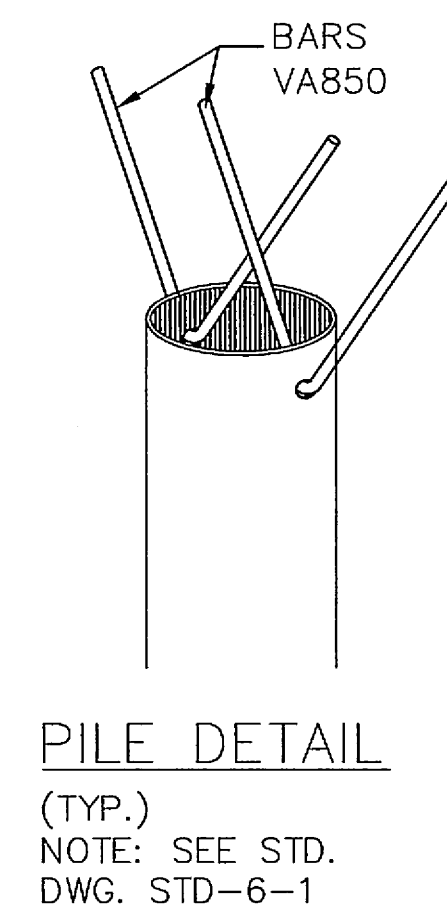
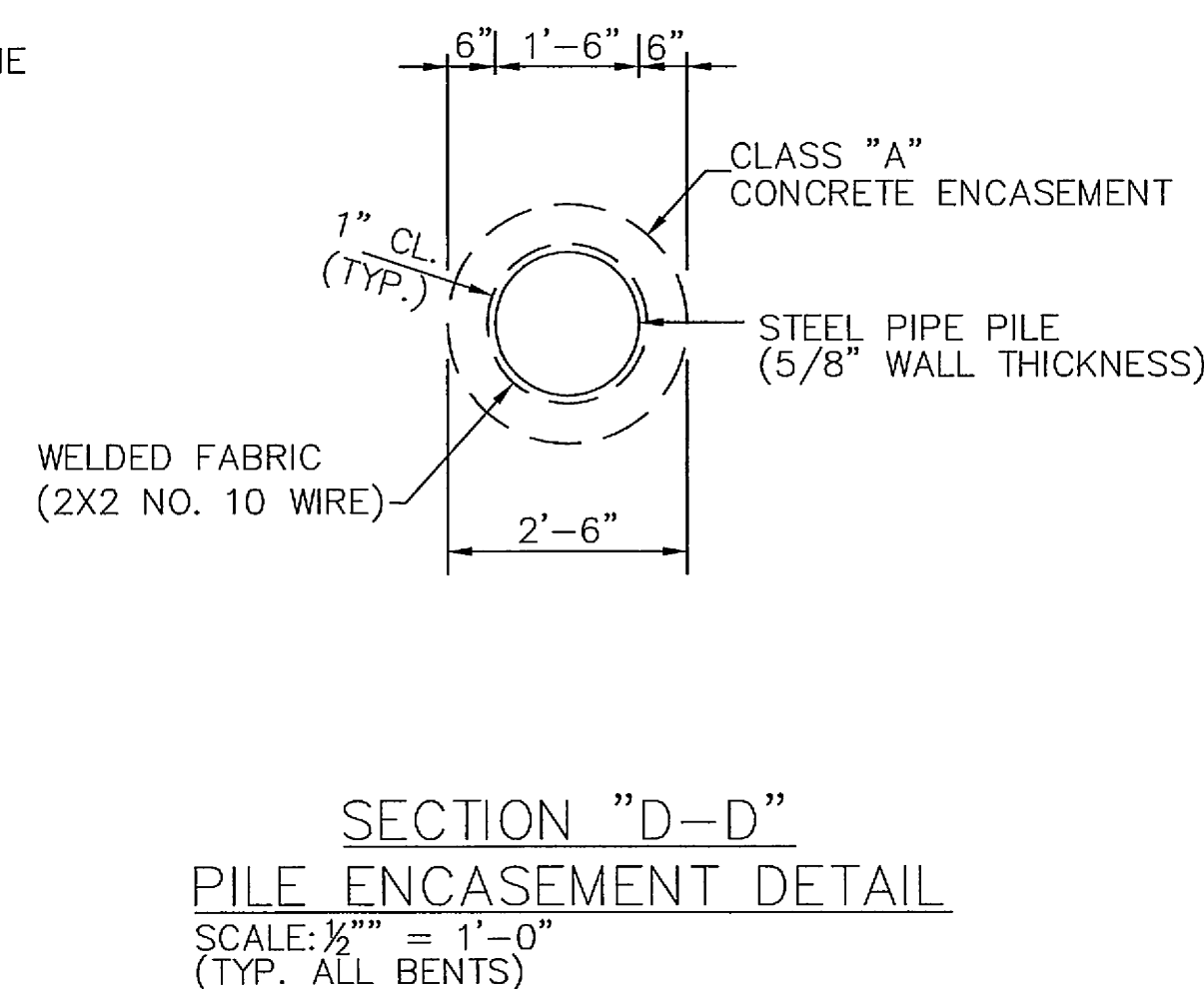
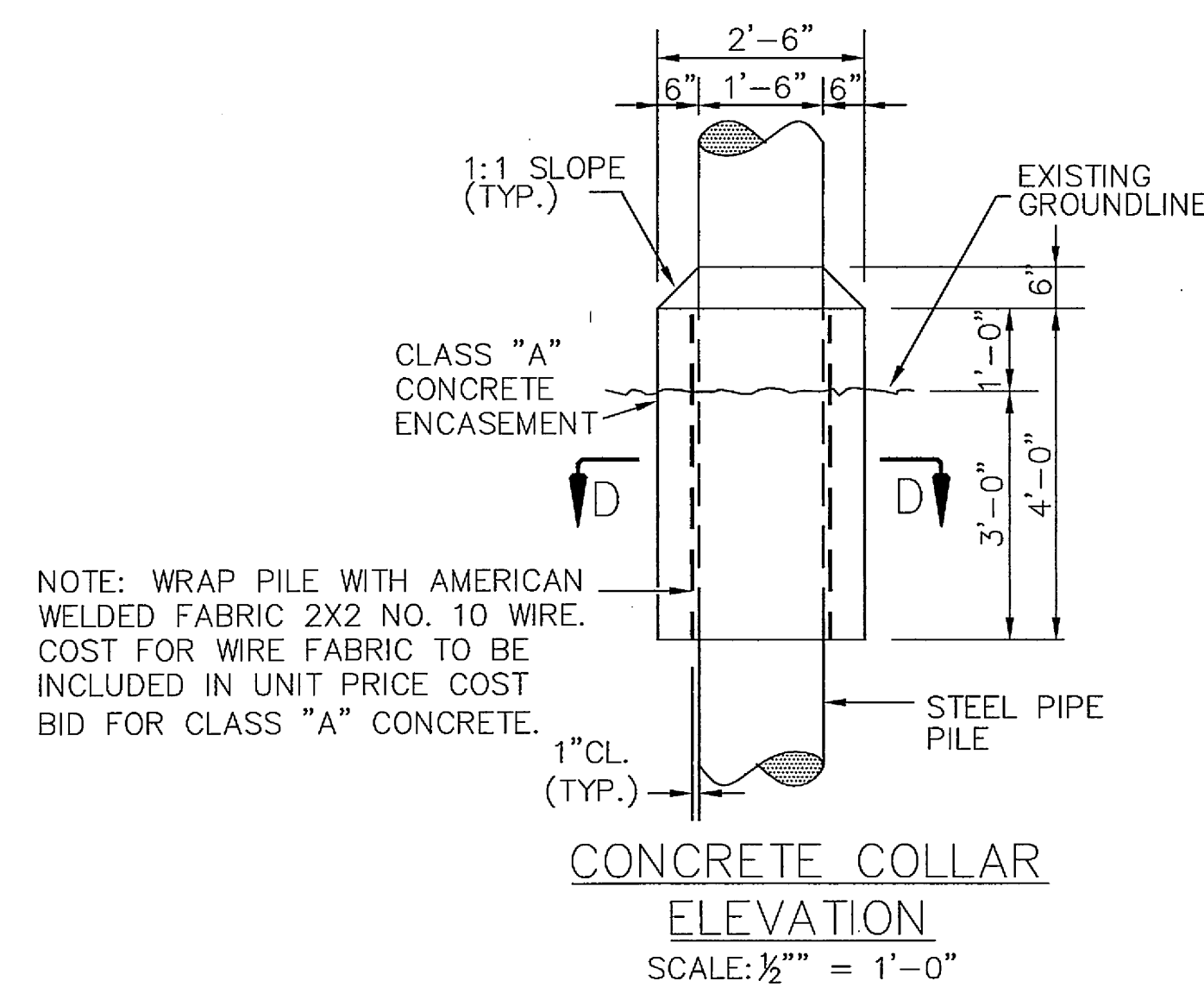
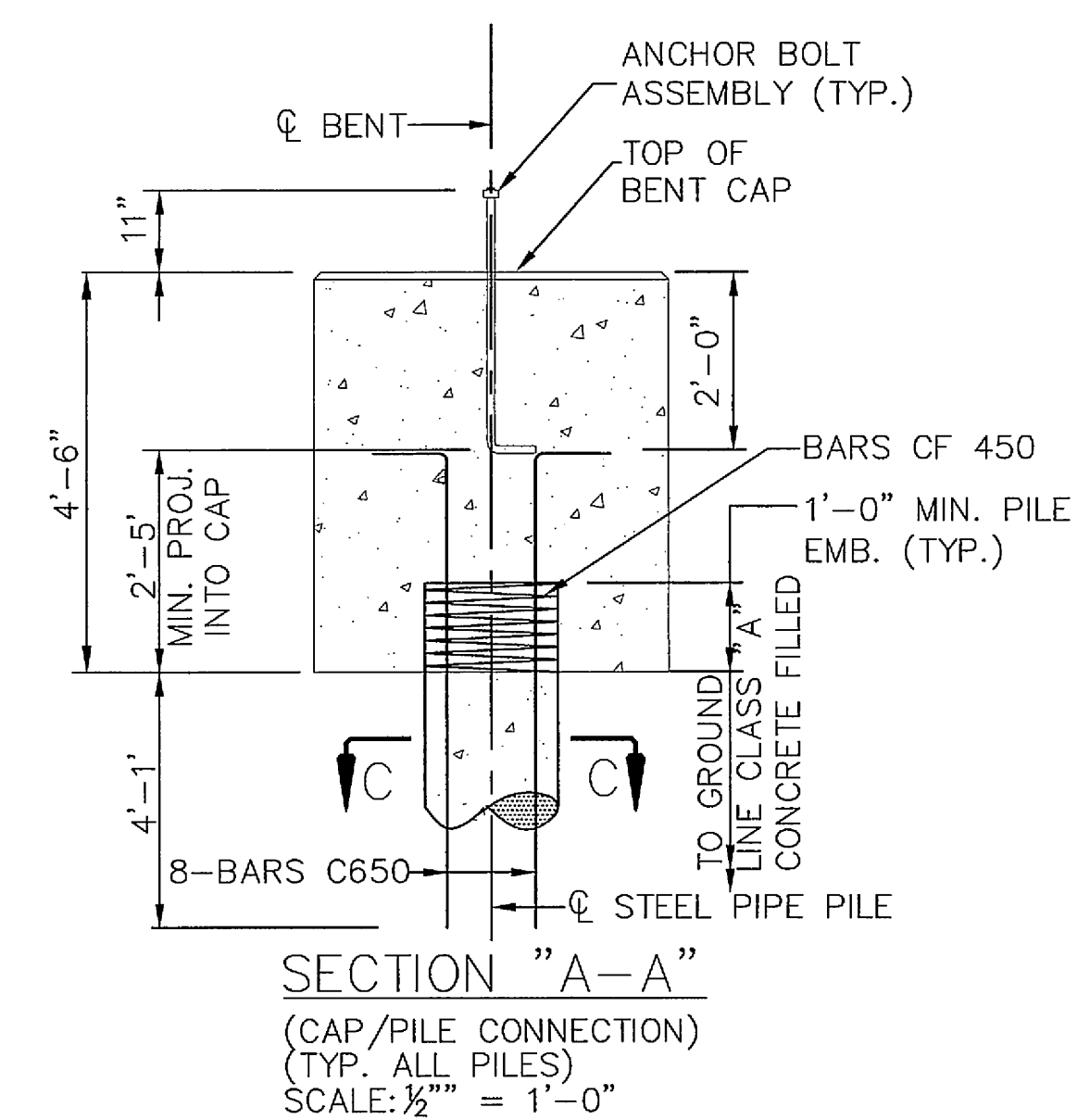


- NOTE:
SINGLE ROW OF 18" ϕ X $\frac{5}{8}$ " GRADE 3 STEEL PIPE PILES SHALL BE ASTM A252 GRADE 3 $F_y=45,000$ PSI MINIMUM.
- CAP.: BOT. 189 KIPS
DRIVEN: 55 FT. (MIN.) EMBED
1. WHEN POURING CAP BEAM, PROVISIONS SHALL BE MADE FOR SETTING ANCHOR BOLTS. SEE STANDARD DRAWING STD-6-1. BOLT PROJECTION IS 11".
 2. RISER BLOCKS SHALL BE POURED MONOLITHICALLY WITH CAP BEAM.
 3. ELASTOMERIC PADS SHALL BE IN PLACE A MINIMUM OF ONE DAY BEFORE BEING DISTURBED BY SETTING BEAMS. PLACE RUBBER BONDING CEMENT IN SUCH A WAY THAT VISIBLE CONCRETE SURFACES WILL NOT BE STAINED.
 4. PIPE PILE REINFORCING STEEL TO EXTEND 1'-3" FROM TOP OF PILE.
 5. SEE STANDARD DRAWING STD-6-1 FOR PILE DETAILS AND NOTES.

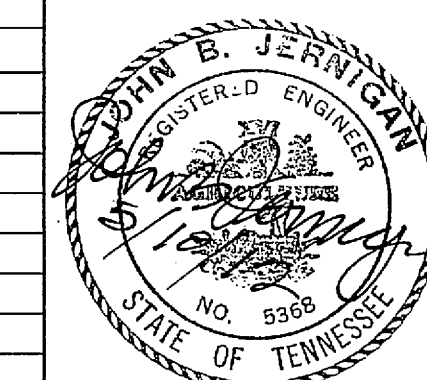


RISER BLOCK REINF
(6 REQD. EACH BENT)
SCALE: $\frac{1}{2}$ " = 1'-0"

ESTIMATED QUANTITIES	
FOR ONE BENT	
CLASS 'A' CONCRETE CY	REINFORCING STEEL LB
34.2	4,110



REVISIONS		
NO.	DATE	DESCRIPTIONS



SHEET 16 OF 29		
STATE OF TENNESSEE SHELBY COUNTY, TN. WARD ROAD OVER BIG CREEK BENT 1 & 2 LAYOUT		
DATE: FEBRUARY 17, 2012	SCALE: N.T.S.	
DRAWN: JP	CHECKED: HSJ	APPROVED: