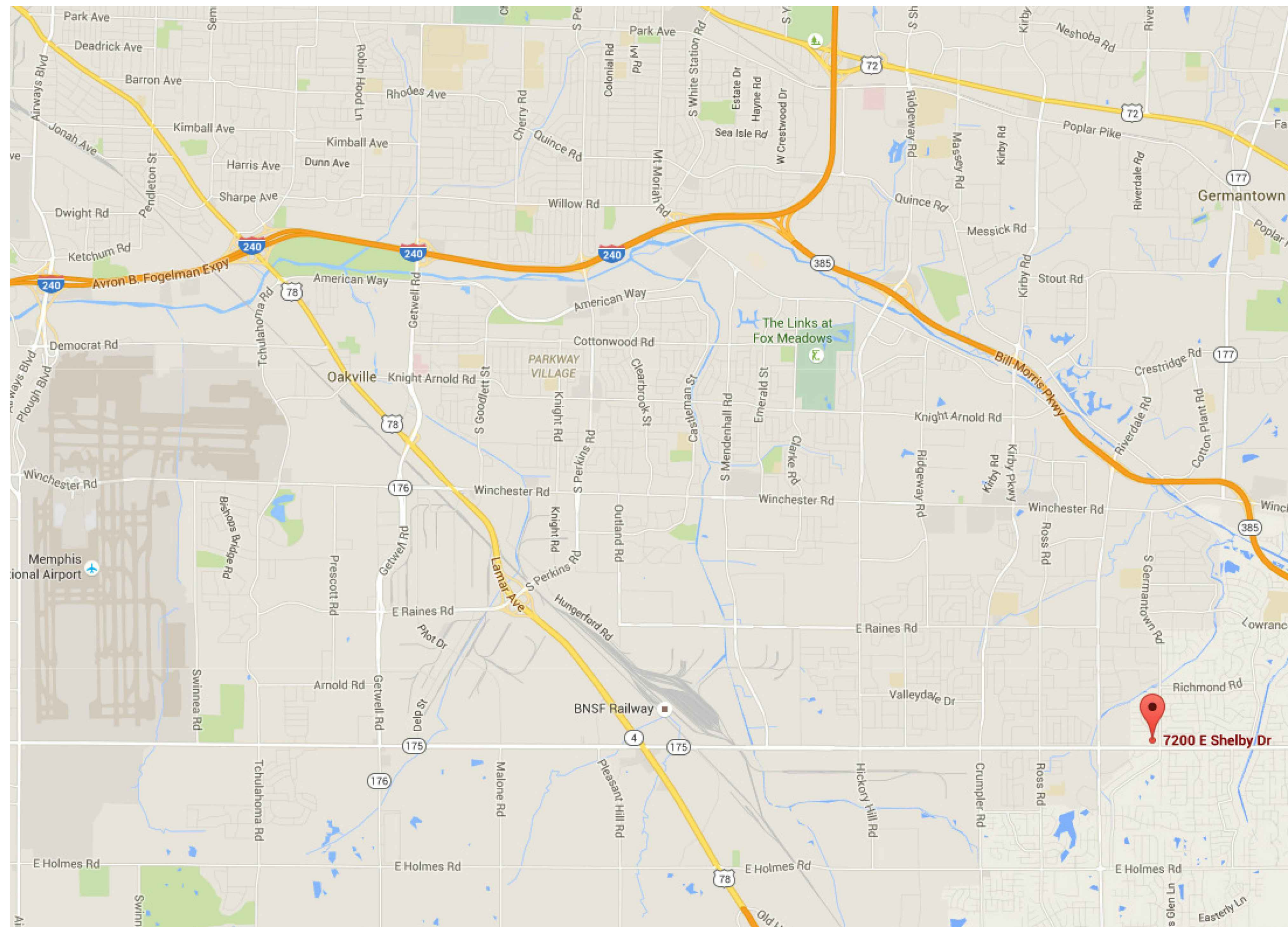


Shelby County Government  
RFP 16-001-36

# Shelby County Library ROOF REPLACEMENT

7200 East Shelby Drive  
Memphis, TN 38125



**PROJECT LOCATION**

**LIST OF DRAWINGS**

- A0 COVER
- A1 ROOF PLAN
- A2 ROOF DETAILS  
GENERAL NOTES

revisions	
no.	date

seal

**john pruet**  
ARCHITECTS

1869 Madison Ave.  
Memphis, TN 38104  
(901) 721-9062  
pruettarchitects@bellsouth.net  
www.pruettarchitects.com

**Shelby County Government  
RFP# 16-001-36  
SHELBY COUNTY LIBRARY  
ROOF REPLACEMENT  
7200 East Shelby Drive, Memphis, Tennessee 38125**

**CONSTRUCTION DOCUMENTS**

sheet name  
**COVER SHEET**

date  
**January 19, 2015**

**A0**

1

2

3

4

5

6

A

B

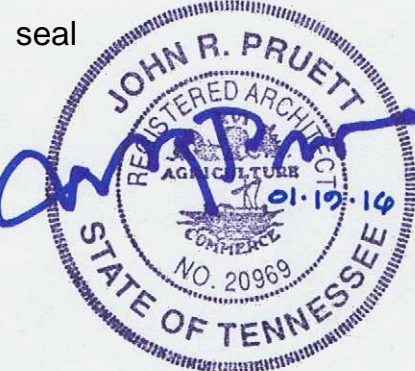
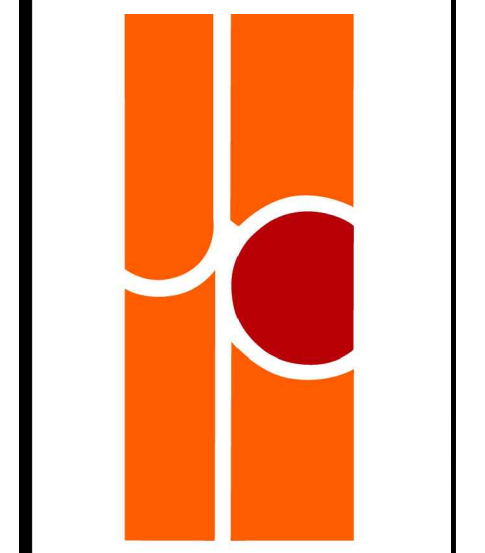
C

D

revisions

no.	date

seal

**john pruet**  
ARCHITECTS

1869 Madison Ave.  
Memphis, TN 38104  
(901) 721-9062  
pruetarchitects@bellsouth.net  
www.pruetarchitects.com

**Shelby County Government**  
RFP# 16-001-36  
**SHELBY COUNTY LIBRARY**  
**ROOF REPLACEMENT**  
7200 East Shelby Drive, Memphis, Tennessee 38125

**CONSTRUCTION DOCUMENTS**

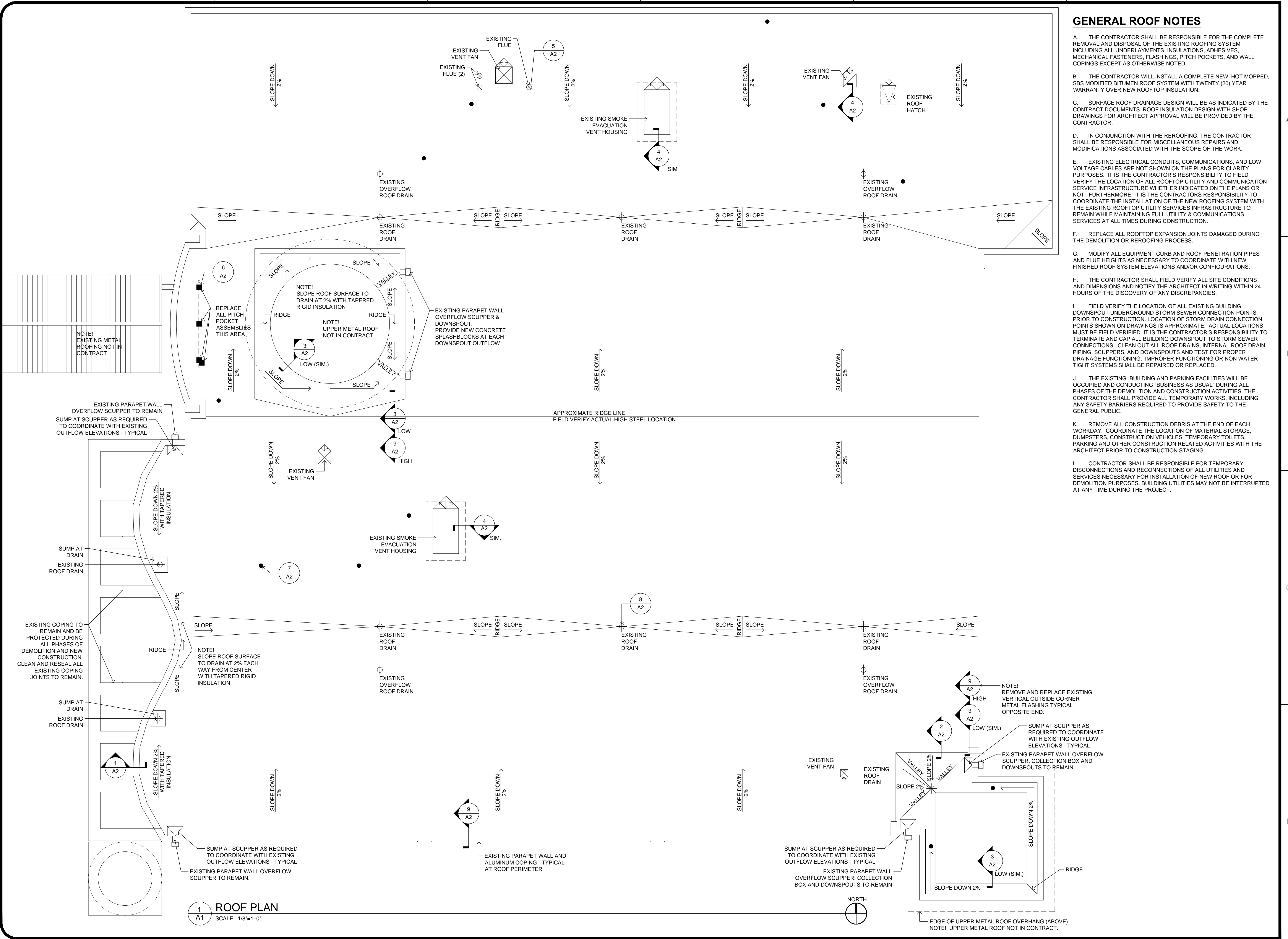
sheet name  
**ROOF PLAN**

date  
**January 19, 2015**

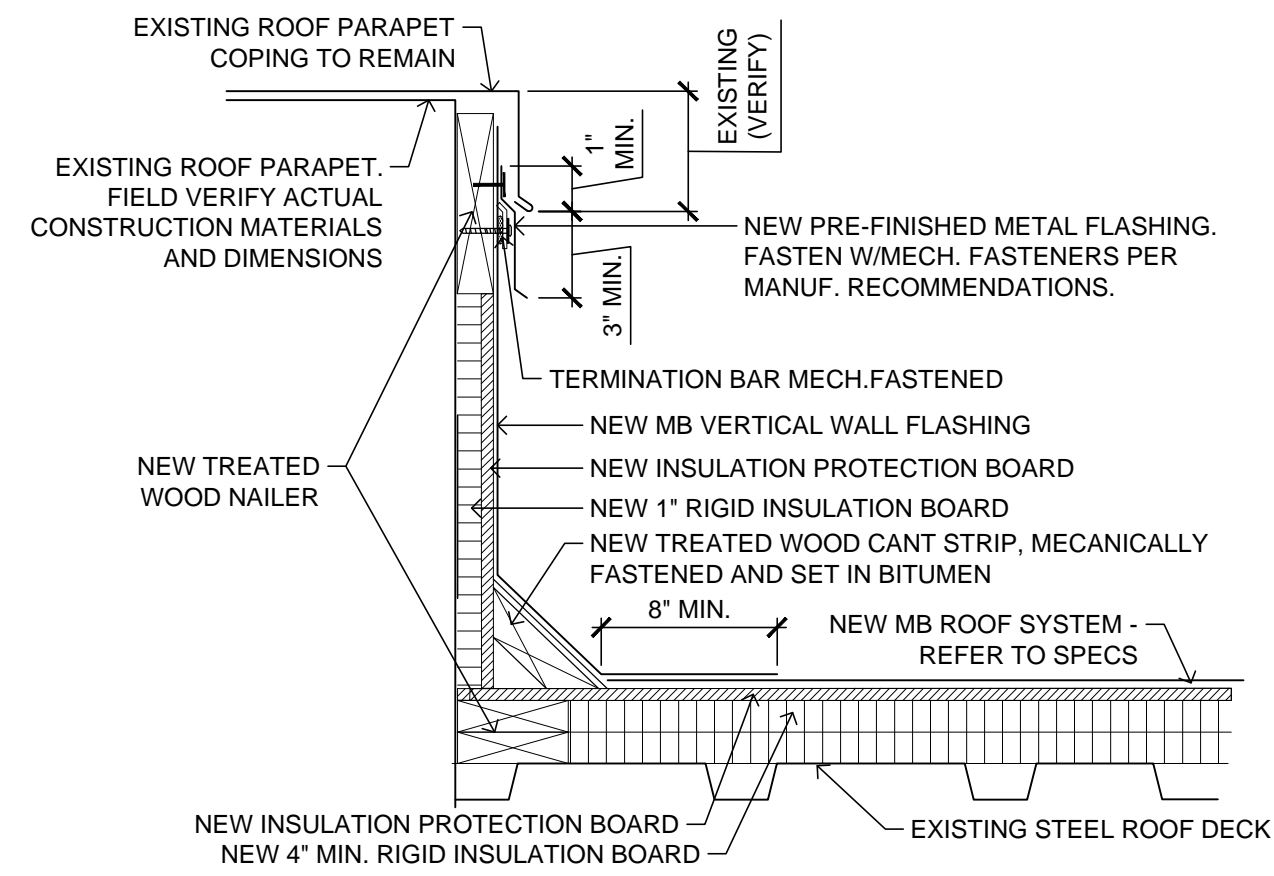
**A1**

**GENERAL ROOF NOTES**

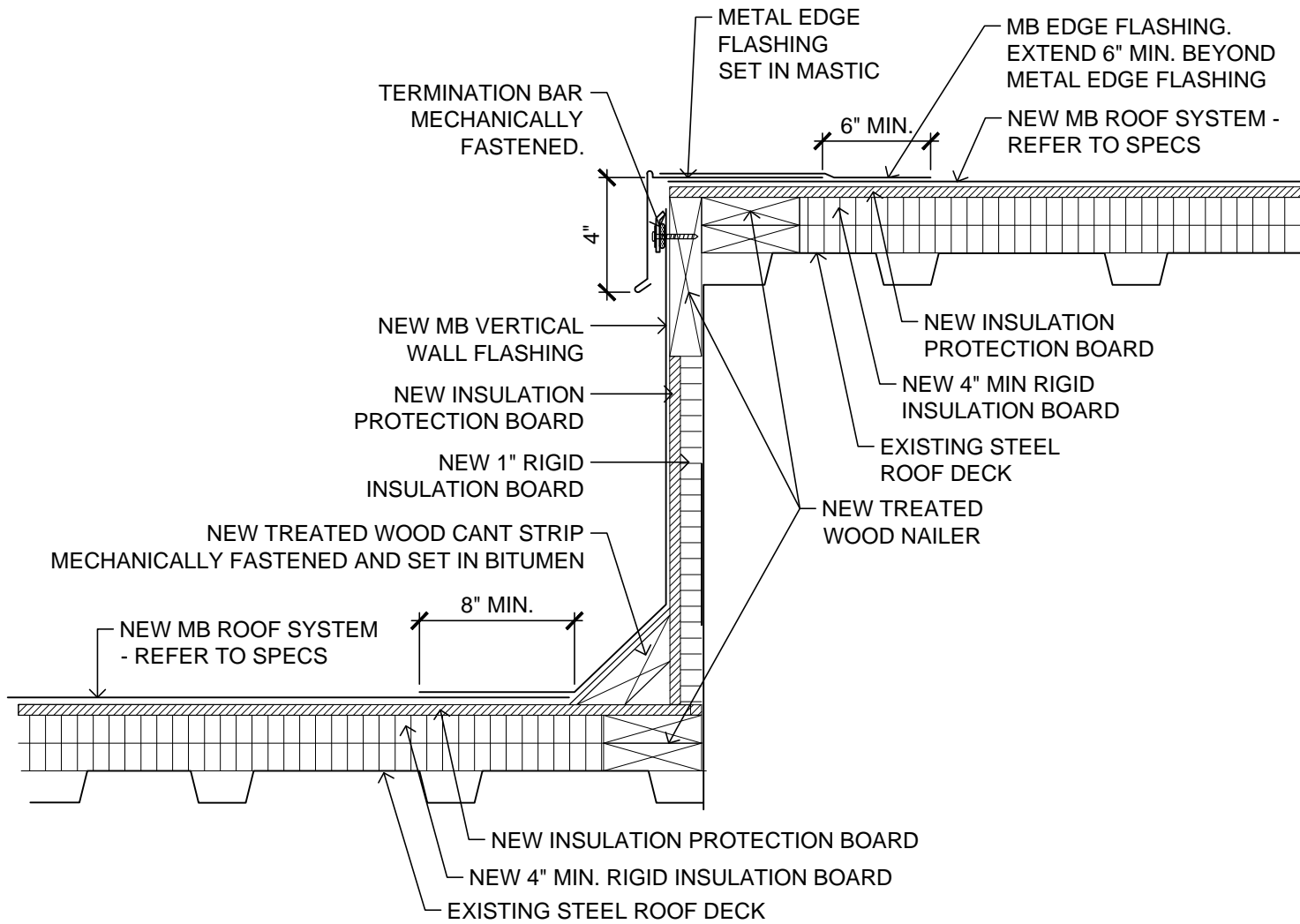
- A. THE CONTRACTOR SHALL BE RESPONSIBLE FOR THE COMPLETE REMOVAL AND DISPOSAL OF THE EXISTING ROOFING SYSTEM INCLUDING ALL UNDERLAYMENTS, INSULATIONS, ADHESIVES, MECHANICAL FASTENERS, FLASHINGS, PITCH POCKETS, AND WALL COPINGS EXCEPT AS OTHERWISE NOTED.
- B. THE CONTRACTOR WILL INSTALL A COMPLETE NEW HOT MAPPED, SBS MODIFIED BITUMEN ROOF SYSTEM WITH TWENTY (20) YEAR WARRANTY OVER NEW ROOFTOP INSULATION.
- C. SURFACE ROOF DRAINAGE DESIGN WILL BE AS INDICATED BY THE CONTRACT DOCUMENTS. ROOF INSULATION DESIGN WITH SHOP DRAWINGS FOR ARCHITECT APPROVAL WILL BE PROVIDED BY THE CONTRACTOR.
- D. IN CONJUNCTION WITH THE REROOFING, THE CONTRACTOR SHALL BE RESPONSIBLE FOR MISCELLANEOUS REPAIRS AND MODIFICATIONS ASSOCIATED WITH THE SCOPE OF THE WORK.
- E. EXISTING ELECTRICAL CONDUITS, COMMUNICATIONS, AND LOW VOLTAGE CABLES ARE NOT SHOWN ON THE PLANS FOR CLARITY PURPOSES. IT IS THE CONTRACTOR'S RESPONSIBILITY TO FIELD VERIFY THE LOCATION OF ALL ROOFTOP UTILITY AND COMMUNICATION SERVICE INFRASTRUCTURE WHETHER INDICATED ON THE PLANS OR NOT. FURTHERMORE, IT IS THE CONTRACTOR'S RESPONSIBILITY TO COORDINATE THE INSTALLATION OF THE NEW ROOFING SYSTEM WITH THE EXISTING ROOFTOP UTILITY SERVICES INFRASTRUCTURE TO REMAIN WHILE MAINTAINING FULL UTILITY & COMMUNICATIONS SERVICES AT ALL TIMES DURING CONSTRUCTION.
- F. REPLACE ALL ROOFTOP EXPANSION JOINTS DAMAGED DURING THE DEMOLITION OR REROOFING PROCESS.
- G. MODIFY ALL EQUIPMENT CURB AND ROOF PENETRATION PIPES AND FLUE HEIGHTS AS NECESSARY TO COORDINATE WITH NEW FINISHED ROOF SYSTEM ELEVATIONS AND/OR CONFIGURATIONS.
- H. THE CONTRACTOR SHALL FIELD VERIFY ALL SITE CONDITIONS AND DIMENSIONS AND NOTIFY THE ARCHITECT IN WRITING WITHIN 24 HOURS OF THE DISCOVERY OF ANY DISCREPANCIES.
- I. FIELD VERIFY THE LOCATION OF ALL EXISTING BUILDING DOWNSPOUT UNDERGROUND STORM SEWER CONNECTION POINTS PRIOR TO CONSTRUCTION. LOCATION OF STORM DRAIN CONNECTION POINTS SHOWN ON DRAWINGS IS APPROXIMATE. ACTUAL LOCATIONS MUST BE FIELD VERIFIED. IT IS THE CONTRACTOR'S RESPONSIBILITY TO TERMINATE AND CAP ALL BUILDING DOWNSPOUT TO STORM SEWER CONNECTIONS. CLEAN OUT ALL ROOF DRAINS, INTERNAL ROOF DRAIN PIPING, SCUPPERS, AND DOWNSPOUTS AND TEST FOR PROPER DRAINAGE FUNCTIONING. IMPROPER FUNCTIONING OR NON WATER TIGHT SYSTEMS SHALL BE REPAIRED OR REPLACED.
- J. THE EXISTING BUILDING AND PARKING FACILITIES WILL BE OCCUPIED AND CONDUCTING 'BUSINESS AS USUAL' DURING ALL PHASES OF THE DEMOLITION AND CONSTRUCTION ACTIVITIES. THE CONTRACTOR SHALL PROVIDE ALL TEMPORARY WORKS, INCLUDING ANY SAFETY BARRIERS REQUIRED TO PROVIDE SAFETY TO THE GENERAL PUBLIC.
- K. REMOVE ALL CONSTRUCTION DEBRIS AT THE END OF EACH WORKDAY. COORDINATE THE LOCATION OF MATERIAL STORAGE, DUMPSTERS, CONSTRUCTION VEHICLES, TEMPORARY TOILETS, PARKING AND OTHER CONSTRUCTION RELATED ACTIVITIES WITH THE ARCHITECT PRIOR TO CONSTRUCTION STAGING.
- L. CONTRACTOR SHALL BE RESPONSIBLE FOR TEMPORARY DISCONNECTIONS AND RECONNECTIONS OF ALL UTILITIES AND SERVICES NECESSARY FOR INSTALLATION OF NEW ROOF OR FOR DEMOLITION PURPOSES. BUILDING UTILITIES MAY NOT BE INTERRUPTED AT ANY TIME DURING THE PROJECT.



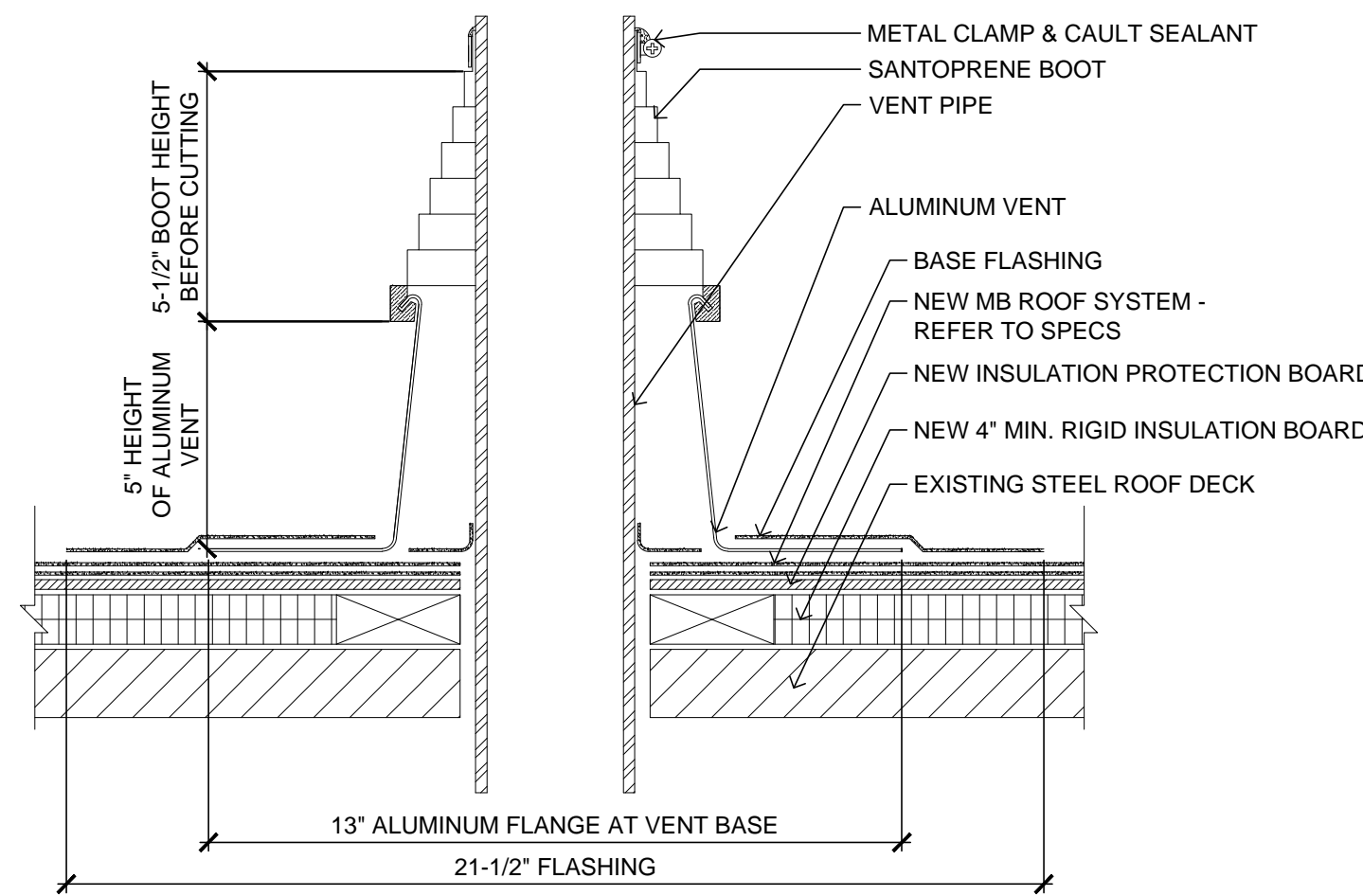
**1 ROOF PLAN**  
SCALE: 1/8"=1'-0"



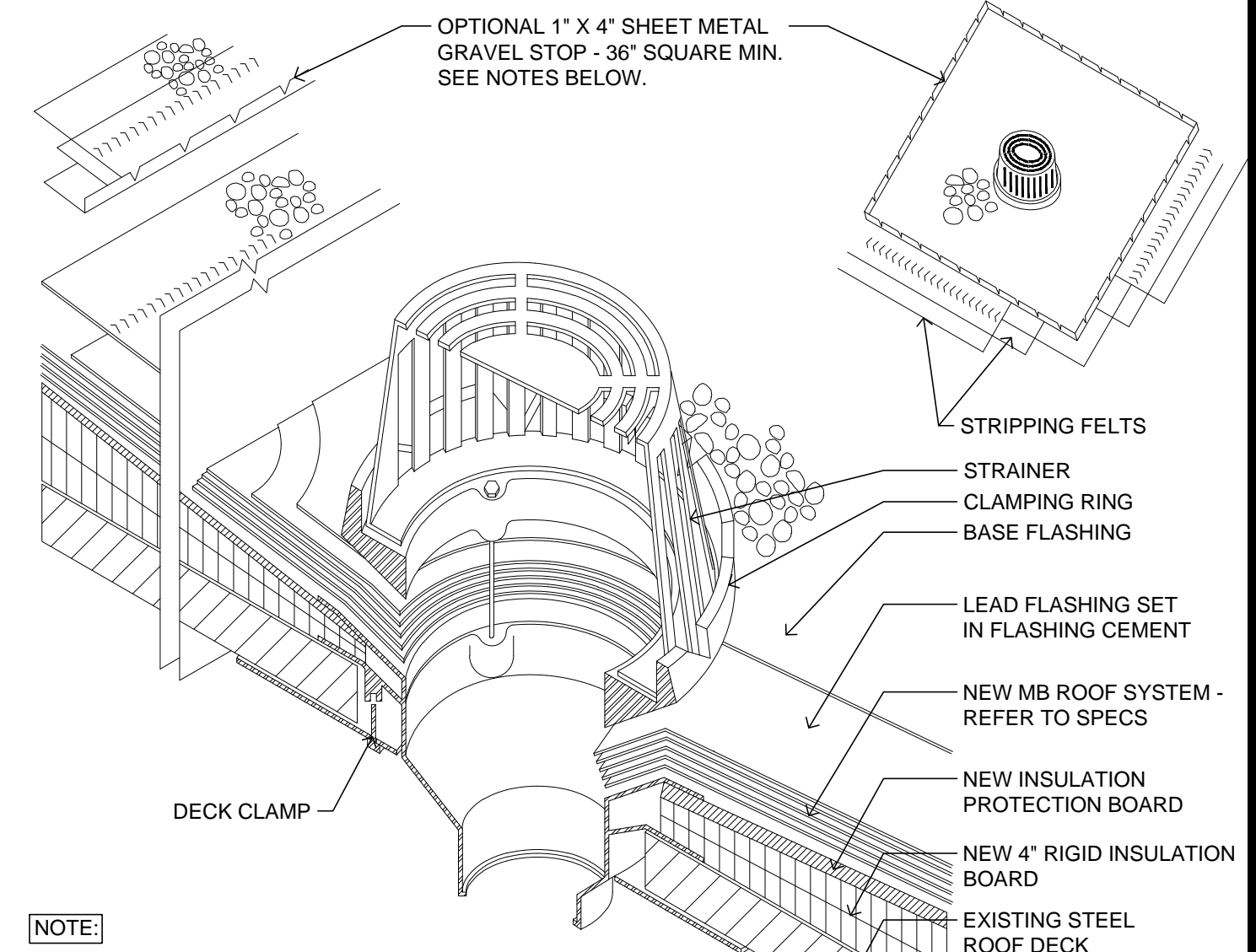
**1**  
A2  
**TYPICAL PARAPET WALL COPING & INTERIOR ROOF SIDE FLASHING DETAIL**  
SCALE: NOT TO SCALE



**2**  
A2  
**TYPICAL FLAT EDGE FLASHING DETAIL**  
SCALE: NOT TO SCALE

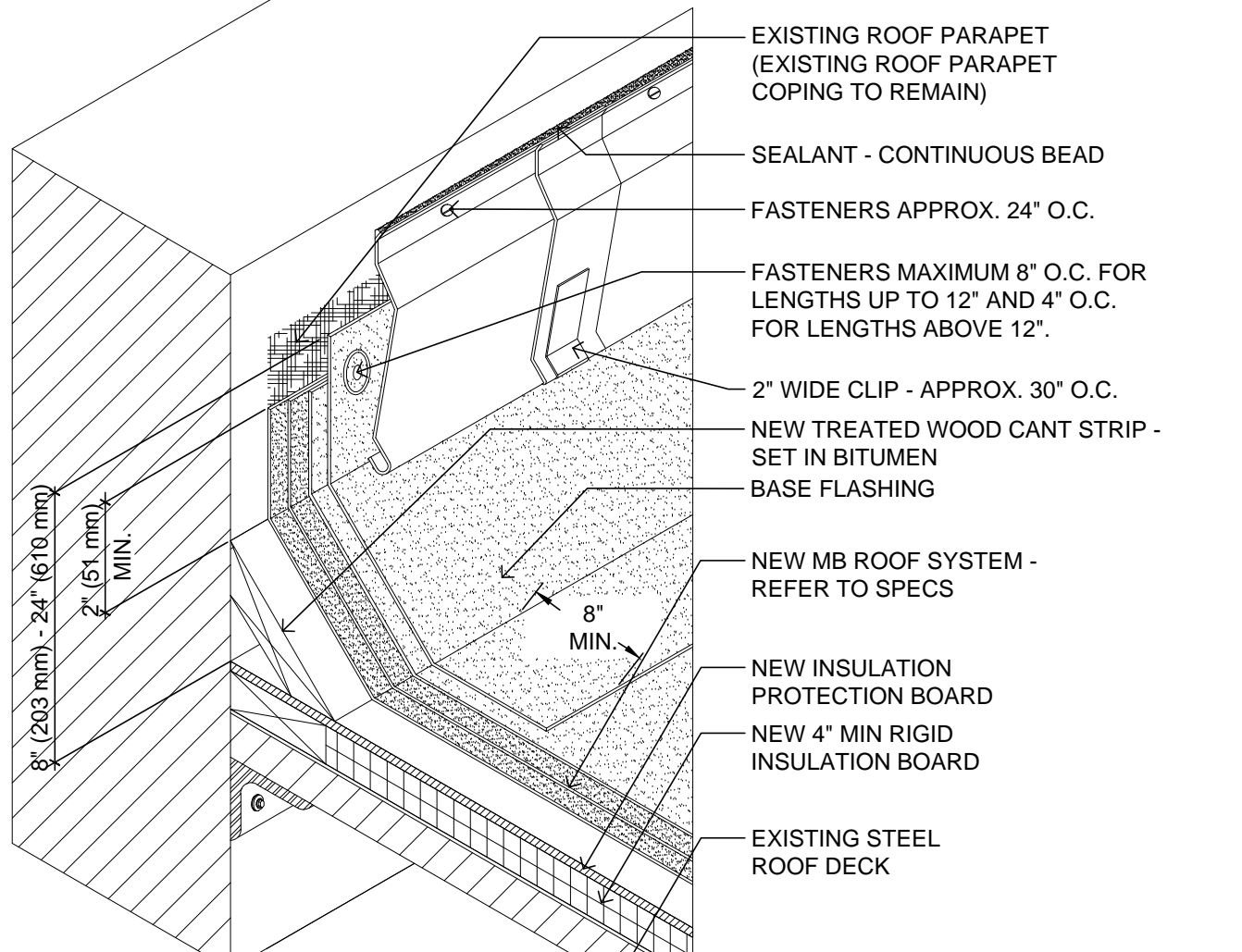


**7**  
A2  
**TYPICAL PIPE SEAL VENT FLASHING**  
SCALE: NOT TO SCALE



**8**  
A2  
**TYPICAL ROOF DRAIN FLASHING**  
SCALE: NOT TO SCALE

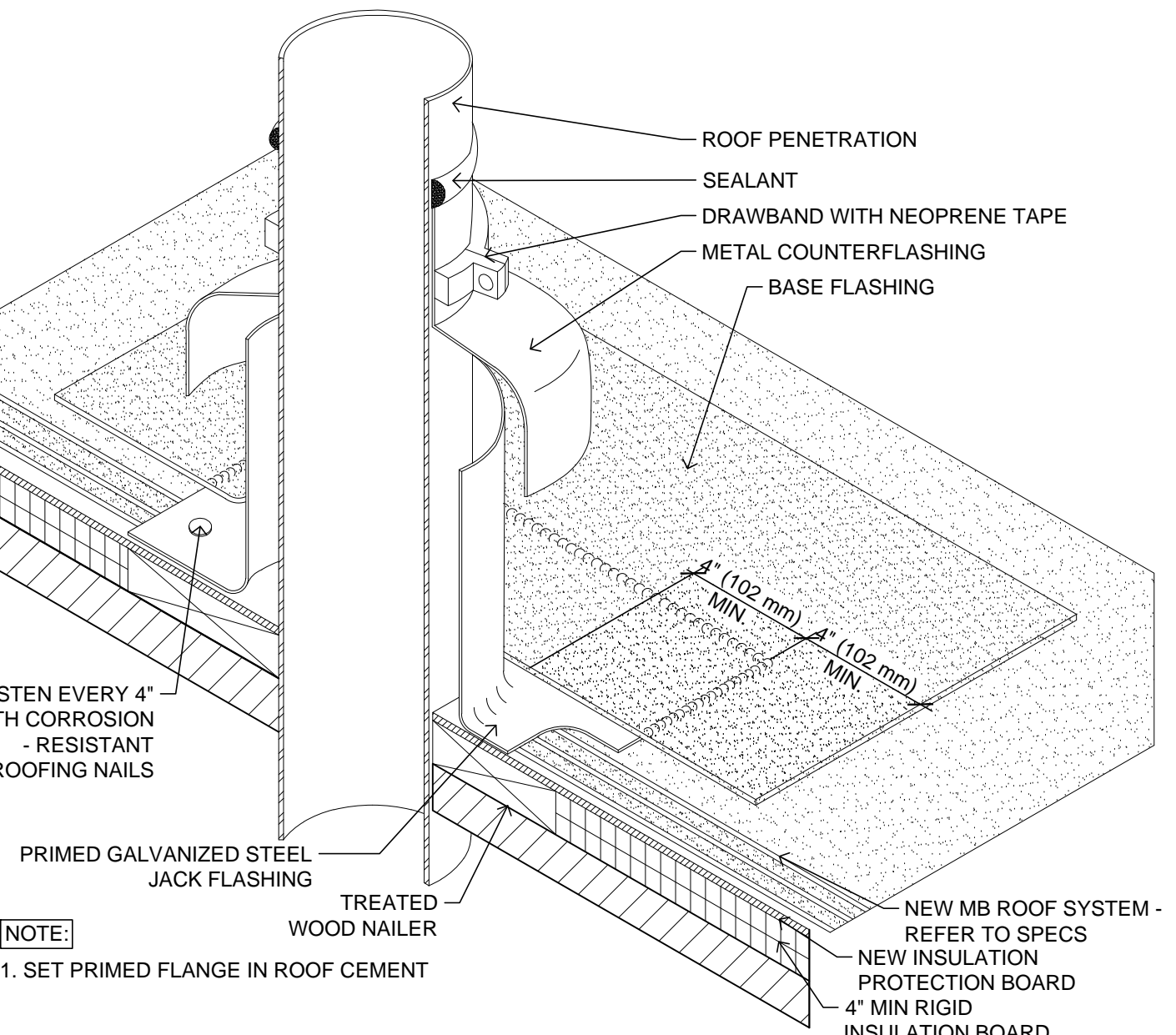
**NOTE:**  
1. MINIMUM 30" (762 mm) SQUARE, 2-1/2-LB. TO 4-LB. LEAD OR 16-OZ. SOFT COPPER FLASHING. SET PRIMED FLANGE IN ROOF CEMENT.  
2. MEMBRANE PLIES, METAL FLASHING, AND FLASHING PLIES EXTEND UNDER CLAMPING RING.  
3. STRIPPING FELTS EXTEND 4" (102 mm) AND 8" (203 mm) BEYOND EDGE OF FLASHING SHEET, BUT NOT BEYOND EDGE OF SUMP. INSTALL STRIPPING BEFORE INSTALLATION OF CAP SHEET OR GRAVEL.



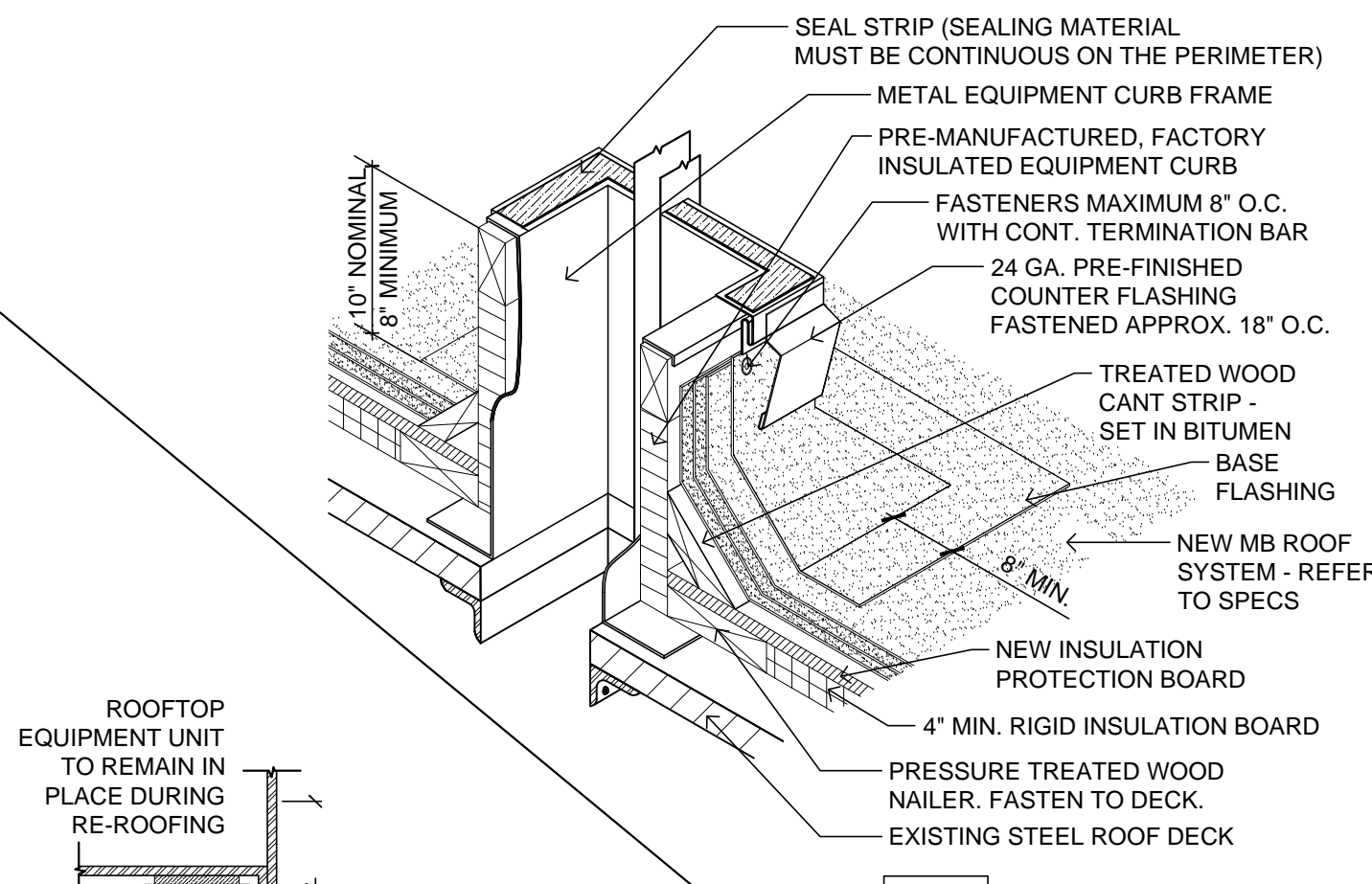
**3**  
A2  
**TYPICAL BASE FLASHING TERMINATION AT MASONRY**  
SCALE: NOT TO SCALE

**3**  
A2  
**TYP. BASE FLASHING TERM. AT STEEL STRUCTURE**  
SCALE: NOT TO SCALE  
SIM.

**3**  
A2  
**TYP. BASE FLASHING TERM. AT STEEL STRUCTURE**  
SCALE: NOT TO SCALE  
SIM.



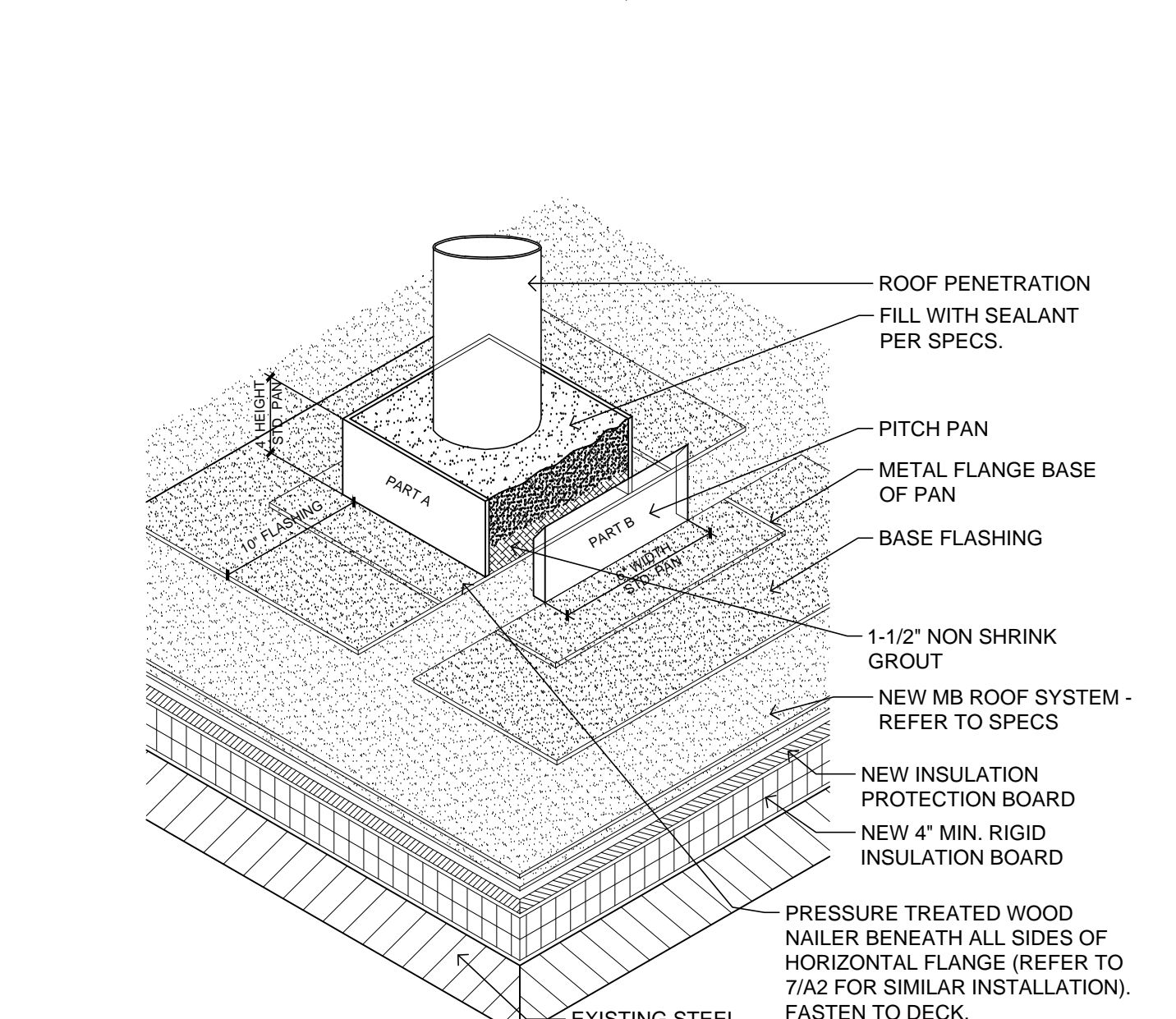
**5**  
A2  
**TYPICAL GALVANIZED METAL JACK FLUE FLASHING**  
SCALE: NOT TO SCALE



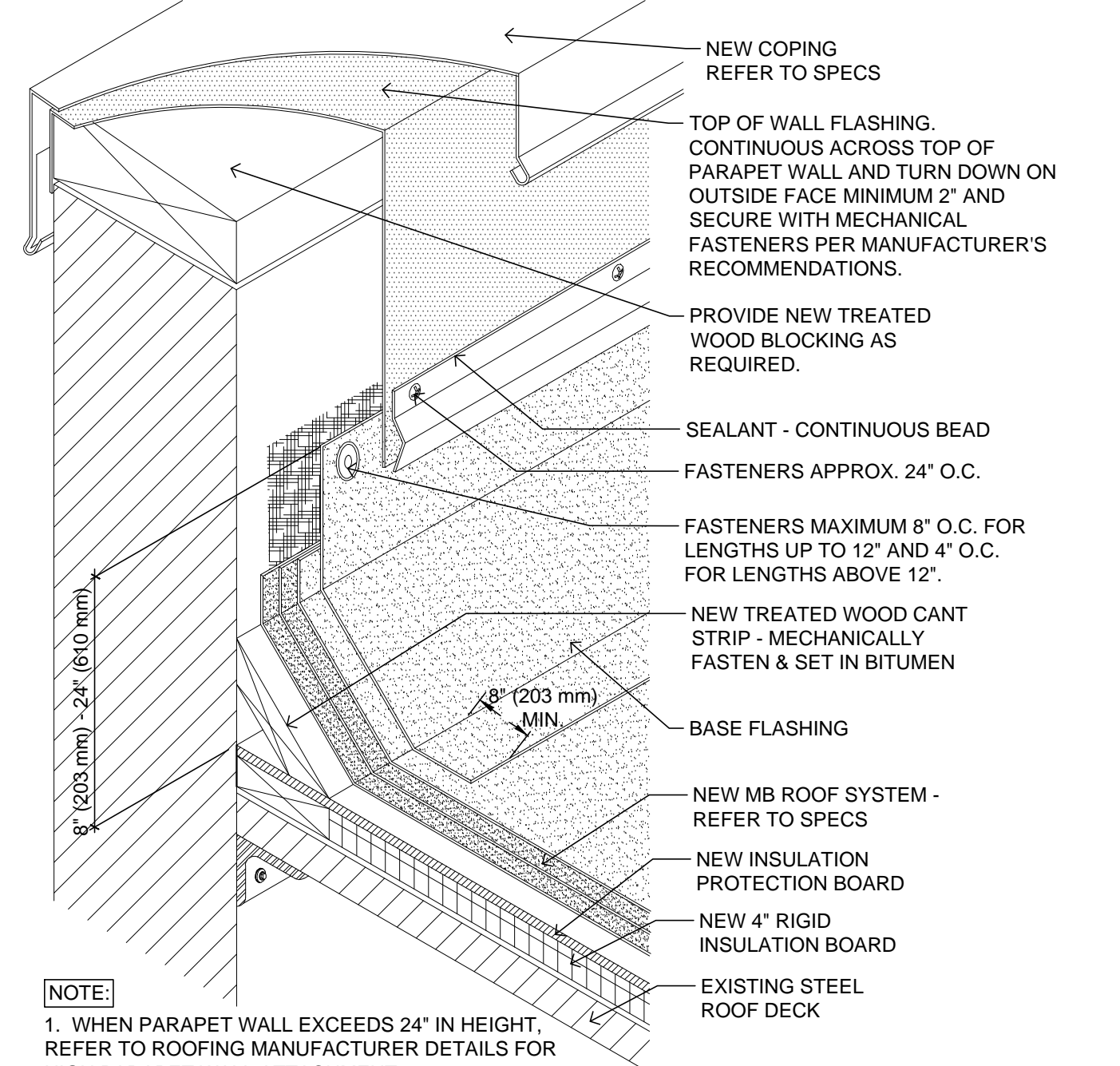
**4**  
A2  
**TYPICAL FLASH IN PLACE EQUIPMENT ROOF CURB**  
SCALE: NOT TO SCALE  
SIM.

**4**  
A2  
**TYPICAL FLASH IN PLACE EQUIPMENT ROOF CURB**  
SCALE: NOT TO SCALE  
SIM.

**4**  
A2  
**TYPICAL FLASH IN PLACE EQUIPMENT ROOF CURB**  
SCALE: NOT TO SCALE  
SIM.



**6**  
A2  
**TYPICAL PITCH POCKET**  
SCALE: NOT TO SCALE



**9**  
A2  
**TYPICAL HI/LO PARAPET FLASHING DETAIL AT NEW COPING**  
SCALE: NOT TO SCALE

**GENERAL ROOF NOTES**

- THE CONTRACTOR SHALL BE RESPONSIBLE FOR THE COMPLETE REMOVAL AND DISPOSAL OF THE EXISTING ROOFING SYSTEM INCLUDING ALL UNDERLAYMENTS, INSULATIONS, ADHESIVES, MECHANICAL FASTENERS, FLASHINGS, PITCH POCKETS, AND WALL COPINGS EXCEPT AS OTHERWISE NOTED.
- THE CONTRACTOR WILL INSTALL A COMPLETE NEW HOT MOPPED, SBS MODIFIED BITUMEN ROOF SYSTEM WITH TWENTY (20) YEAR WARRANTY OVER NEW ROOFTOP INSULATION.
- SURFACE ROOF DRAINAGE DESIGN WILL BE AS INDICATED BY THE CONTRACT DOCUMENTS. ROOF INSULATION DESIGN WITH SHOP DRAWINGS FOR ARCHITECT APPROVAL WILL BE PROVIDED BY THE CONTRACTOR.
- IN CONJUNCTION WITH THE REROOFING, THE CONTRACTOR SHALL BE RESPONSIBLE FOR MISCELLANEOUS REPAIRS AND MODIFICATIONS ASSOCIATED WITH THE SCOPE OF THE WORK.
- EXISTING ELECTRICAL CONDUITS, COMMUNICATIONS, AND LOW VOLTAGE CABLES ARE NOT SHOWN ON THE PLANS FOR CLARITY PURPOSES. IT IS THE CONTRACTOR'S RESPONSIBILITY TO FIELD VERIFY THE LOCATION OF ALL ROOFTOP UTILITY AND COMMUNICATION SERVICE INFRASTRUCTURE WHETHER INDICATED ON THE PLANS OR NOT. FURTHERMORE, IT IS THE CONTRACTOR'S RESPONSIBILITY TO COORDINATE THE INSTALLATION OF THE NEW ROOFING SYSTEM WITH THE EXISTING ROOFTOP UTILITY SERVICES INFRASTRUCTURE TO REMAIN WHILE MAINTAINING FULL UTILITY & COMMUNICATIONS SERVICES AT ALL TIMES DURING CONSTRUCTION.
- REPLACE ALL ROOFTOP EXPANSION JOINTS DAMAGED DURING THE DEMOLITION OR REROOFING PROCESS.
- MODIFY ALL EQUIPMENT CURB AND ROOF PENETRATION PIPES AND FLUE HEIGHTS AS NECESSARY TO COORDINATE WITH NEW FINISHED ROOF SYSTEM ELEVATIONS AND/OR CONFIGURATIONS.
- THE CONTRACTOR SHALL FIELD VERIFY ALL SITE CONDITIONS AND DIMENSIONS AND NOTIFY THE ARCHITECT IN WRITING WITHIN 24 HOURS OF THE DISCOVERY OF ANY DISCREPANCIES.
- FIELD VERIFY THE LOCATION OF ALL EXISTING BUILDING DOWNSPOUT UNDERGROUND STORM SEWER CONNECTION POINTS PRIOR TO CONSTRUCTION. LOCATION OF STORM DRAIN CONNECTION POINTS SHOWN ON DRAWINGS IS APPROXIMATE. ACTUAL LOCATIONS MUST BE FIELD VERIFIED. IT IS THE CONTRACTOR'S RESPONSIBILITY TO TERMINATE AND CAP ALL BUILDING DOWNSPOUT TO STORM SEWER CONNECTIONS. CLEAN OUT ALL ROOF DRAINS, INTERNAL ROOF DRAIN PIPING, SCUPPERS, AND DOWNSPOUTS AND TEST FOR PROPER DRAINAGE FUNCTIONING. IMPROPER FUNCTIONING OR NON WATER TIGHT SYSTEMS SHALL BE REPAIRED OR REPLACED.
- THE EXISTING BUILDING AND PARKING FACILITIES WILL BE OCCUPIED AND CONDUCTING "BUSINESS AS USUAL" DURING ALL PHASES OF THE DEMOLITION AND CONSTRUCTION ACTIVITIES. THE CONTRACTOR SHALL PROVIDE ALL TEMPORARY WORKS, INCLUDING ANY SAFETY BARRIERS REQUIRED TO PROVIDE SAFETY TO THE GENERAL PUBLIC.
- REMOVE ALL CONSTRUCTION DEBRIS AT THE END OF EACH WORKDAY. COORDINATE THE LOCATION OF MATERIAL STORAGE, DUMPSTERS, CONSTRUCTION VEHICLES, TEMPORARY TOILETS, PARKING AND OTHER CONSTRUCTION RELATED ACTIVITIES WITH THE ARCHITECT PRIOR TO CONSTRUCTION STAGING.
- CONTRACTOR SHALL BE RESPONSIBLE FOR TEMPORARY DISCONNECTIONS AND RECONNECTIONS OF ALL UTILITIES AND SERVICES NECESSARY FOR INSTALLATION OF NEW ROOF OR FOR DEMOLITION PURPOSES. BUILDING UTILITIES MAY NOT BE INTERRUPTED AT ANY TIME DURING THE PROJECT.

revisions	
no.	date
seal	
<b>john pruet</b> ARCHITECTS 1869 Madison Ave. Memphis, TN 38104 (901) 721-9062 pruetarchitects@bellsouth.net www.pruettarchitects.com	
<b>Shelby County Government</b> RFP# 16-001-36 <b>SHELBY COUNTY LIBRARY</b> <b>ROOF REPLACEMENT</b> 7200 East Shelby Drive, Memphis, Tennessee 38125	
CONSTRUCTION DOCUMENTS	
sheet name	
ROOF DETAILS	
date	
January 19, 2015	